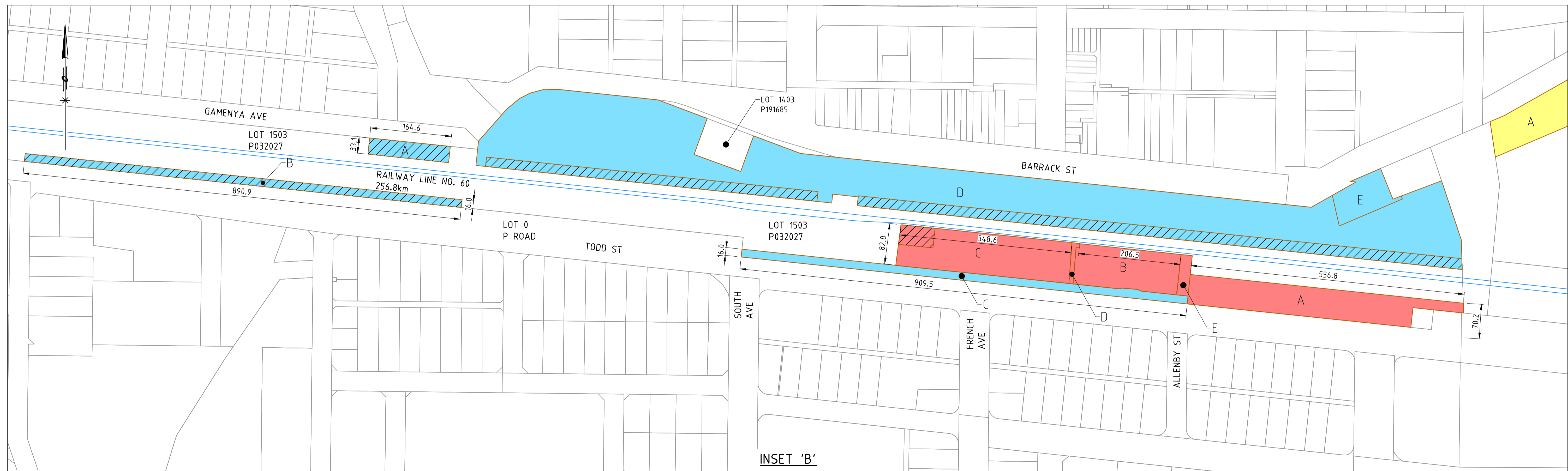
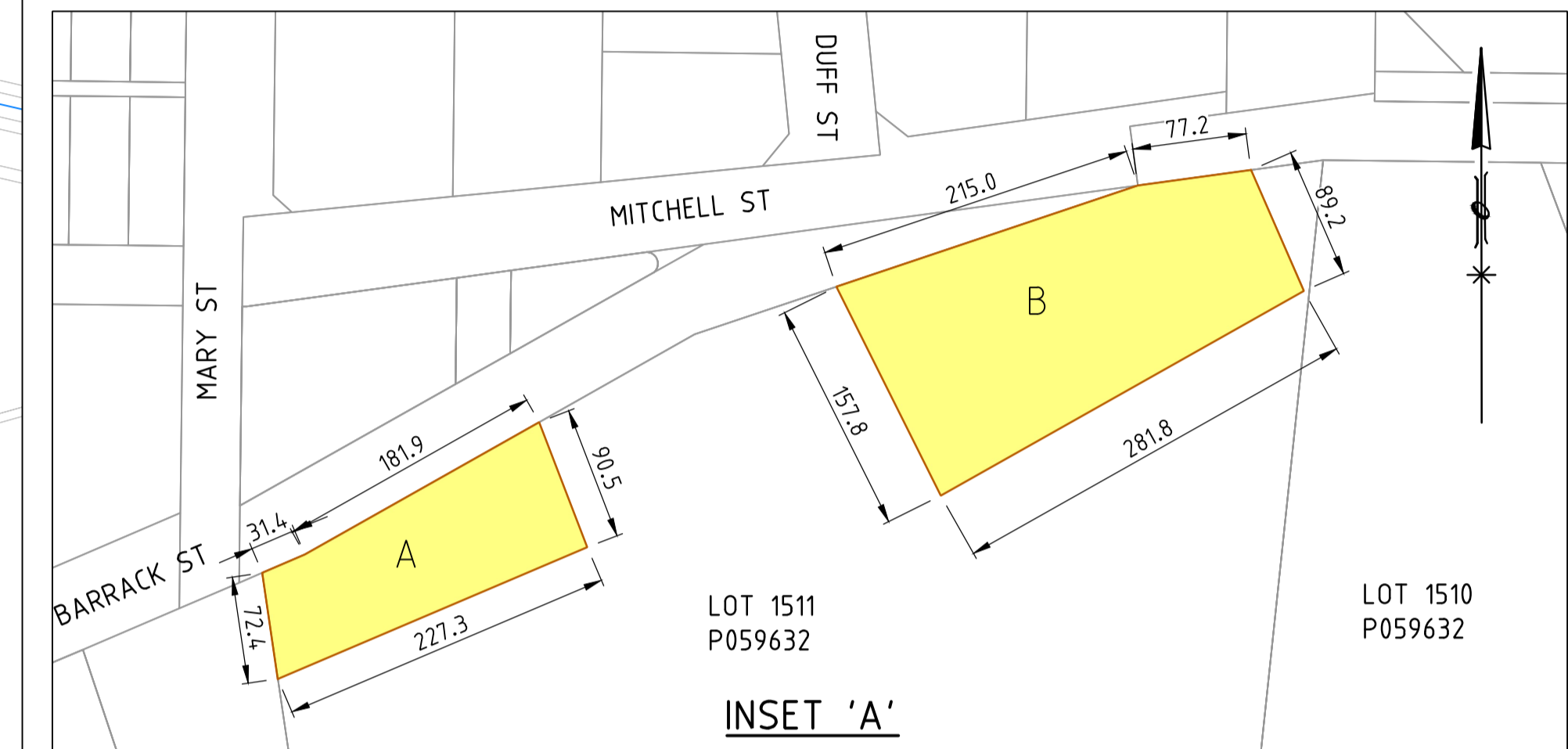


| LEGEND                                                                                                         |                                                 |  |
|----------------------------------------------------------------------------------------------------------------|-------------------------------------------------|--|
| <span style="display:inline-block; width:15px; height:10px; background-color:red;"></span> L7465               | A - FORMER L6918 - AREA = 7,346m <sup>2</sup>   |  |
|                                                                                                                | B - FORMER L2966 - AREA = 4,338m <sup>2</sup>   |  |
|                                                                                                                | C - FORMER L2966 - AREA = 7,289m <sup>2</sup>   |  |
|                                                                                                                | D - AREA = 197m <sup>2</sup>                    |  |
|                                                                                                                | E - AREA = 478m <sup>2</sup>                    |  |
|                                                                                                                | TOTAL - AREA = 19,647.88m <sup>2</sup>          |  |
| <span style="display:inline-block; width:15px; height:10px; background-color:yellow;"></span> L7466            | A - FORMER L2577 - AREA = 4304m <sup>2</sup>    |  |
|                                                                                                                | B - FORMER L5317 - AREA = 9157m <sup>2</sup>    |  |
|                                                                                                                | TOTAL - AREA = 13,461.20m <sup>2</sup>          |  |
| <span style="display:inline-block; width:15px; height:10px; background-color:lightblue;"></span> L7467         | A - FORMER L1758 - AREA = 1363m <sup>2</sup>    |  |
|                                                                                                                | B - FORMER L1790 - AREA = 3564m <sup>2</sup>    |  |
|                                                                                                                | C - FORMER L1790 - AREA = 3661m <sup>2</sup>    |  |
|                                                                                                                | D - FORMER L2824 - AREA = 5,425.4m <sup>2</sup> |  |
|                                                                                                                | E - SURPLUS LAND - AREA = 2,061m <sup>2</sup>   |  |
|                                                                                                                | TOTAL - AREA = 65,231.33m <sup>2</sup>          |  |
| <span style="display:inline-block; width:15px; height:10px; border:1px dashed black;"></span> IN CORRIDOR LAND |                                                 |  |



| REV | DATE     | AMENDMENT                 | DSN | DRN | CHKD | APP |
|-----|----------|---------------------------|-----|-----|------|-----|
| D   | 28.04.22 | ADDED AREA D & E TO L7465 |     |     | AK   |     |
| C   | 01.06.17 | L7466 L7467 AMENDED       |     |     | LV   |     |
| B   | 20.04.17 | L7466 AMENDED             |     |     | OS   |     |
| A   | 13.02.17 | L7465 L7466 L7467         |     |     | OS   |     |

|           |    |                       |
|-----------|----|-----------------------|
| ORIG SIZE | A1 | AT ORIGINAL PLOT SIZE |
|-----------|----|-----------------------|

This document must not be copied without PTA's written permission, and the contents thereof must not be imparted to a third party nor be used for any unauthorised purpose.

REFERENCE DRGS  
XR Exi BDY Reserve ARC MGA94z50 151116

SCALE : 1:2000 (@ A1)  
DATUM : HORIZONTAL: MGA50 VERTICAL: AHD71  
DOC REVIEW NOTE No.

DESIGNED OS  
DRAWN OS  
CHECKED SB  
APPROVED FOR ISSUE  
EXECUTIVE DIRECTOR  
PTA Division / External Company  
DATE

Government of Western Australia  
Public Transport Authority

PROPERTY MANAGEMENT

LEASE OF LAND TO THE SHIRE OF MERREDIN  
COMMUNITY PURPOSE

PTA Drawing No: L7465 L7466 L7467 REV : D