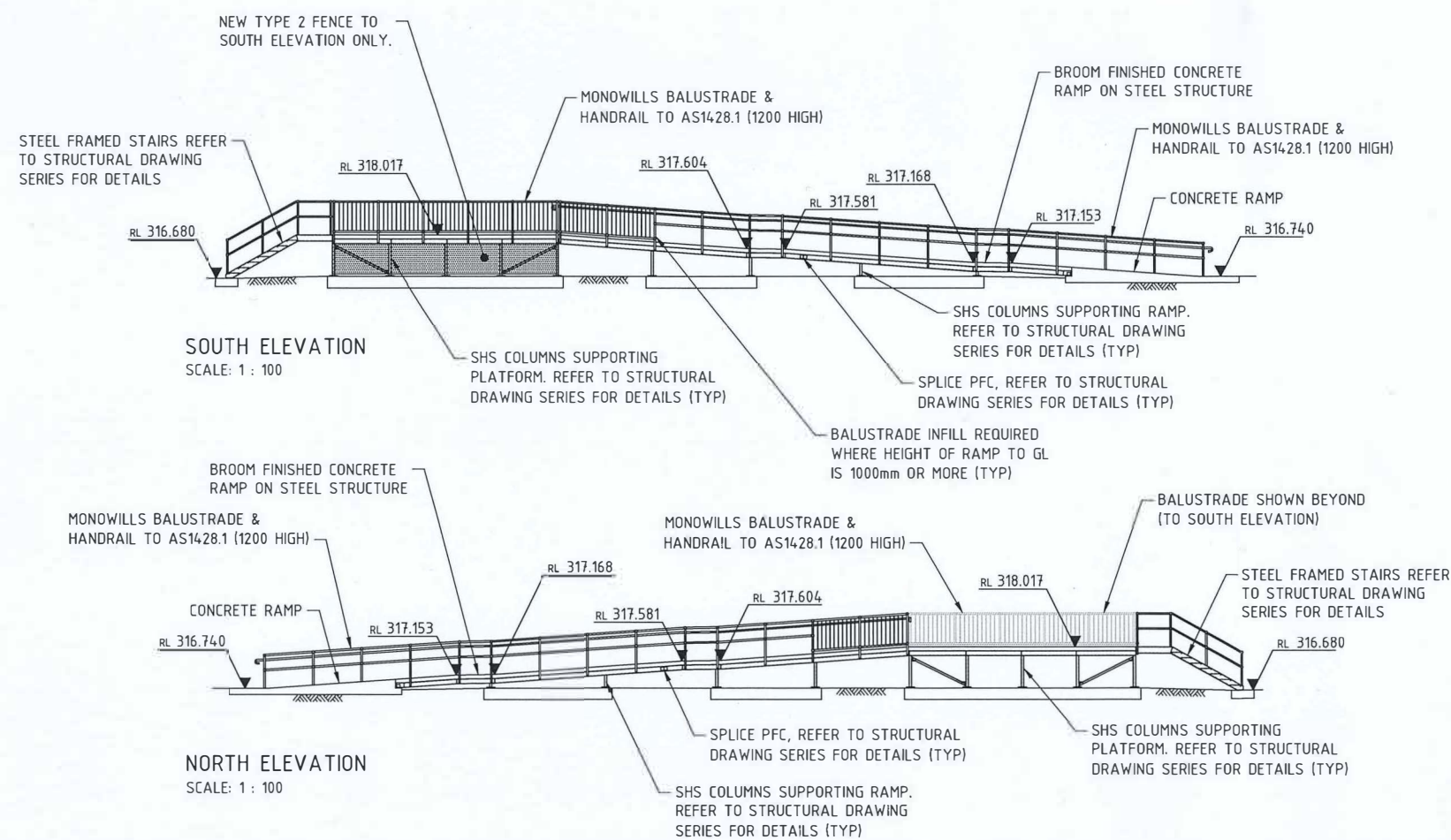
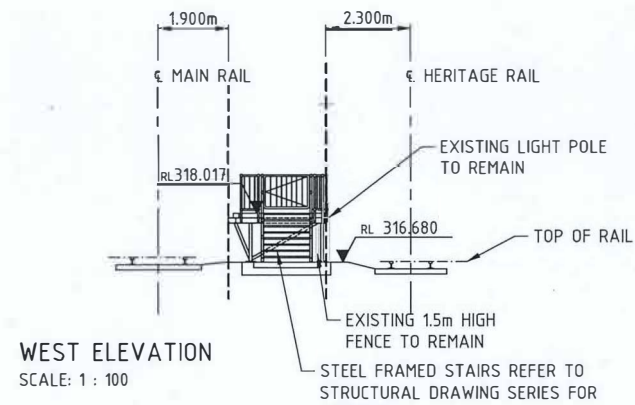


SITE PLAN - TGS1
SCALE: 1 : 100

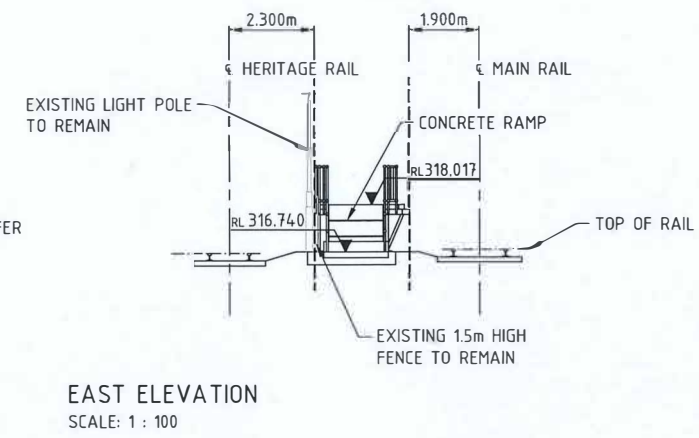


SOUTH ELEVATION
SCALE: 1 : 100

NORTH ELEVATION
SCALE: 1 : 100



WEST ELEVATION
SCALE: 1 : 100



EAST ELEVATION
SCALE: 1 : 100

DETAILED DESIGN

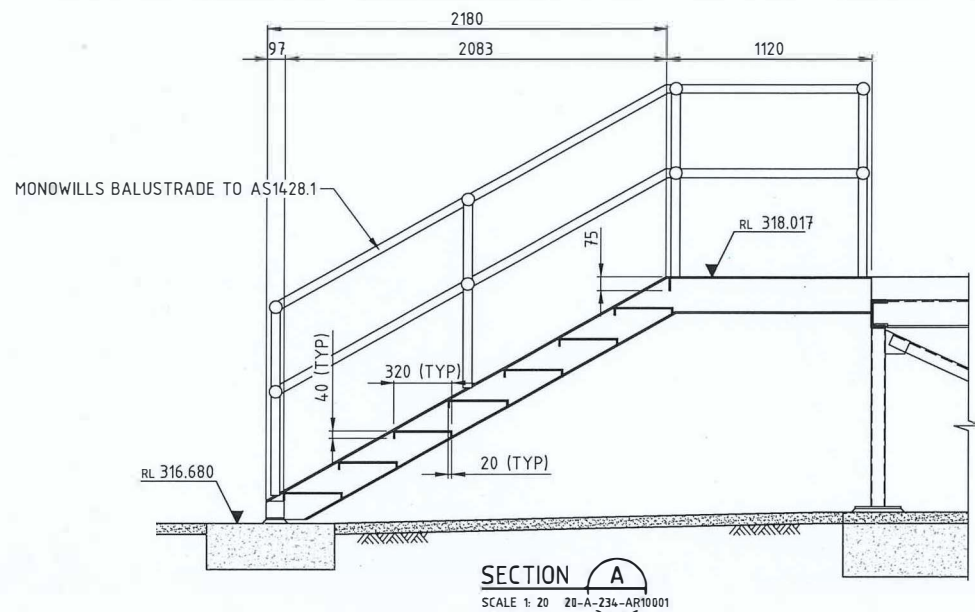
REV	DATE	ISSUED FOR 100% DETAILED DESIGN	WZ	WZ	DB	DB
A	09.02.24		DSN	DRN	CHK	APP
ORIG SIZE		AMENDMENT		100mm		
A1		AT ORIGINAL PLOT SIZE		100mm		



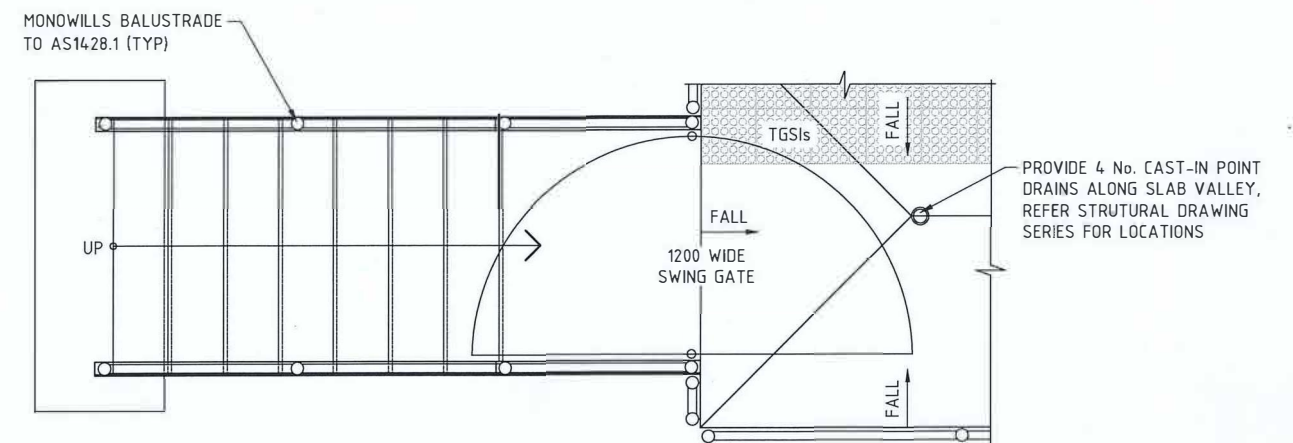
REFERENCES
XR20C_SURVEY_MERREDIN_STATION_2D_20230317
XR20S_PLATFORM_20231120
XR20S_DETAILS_20231120

SCALE :	DESIGNED	WZ
1 : 100	DRAWN	WZ
(@ A1)	CHECKED	DB
DATUM	APPROVED	
HORIZONTAL: MERREDIN94	DATE	9/2/24
VERTICAL: AHD71		

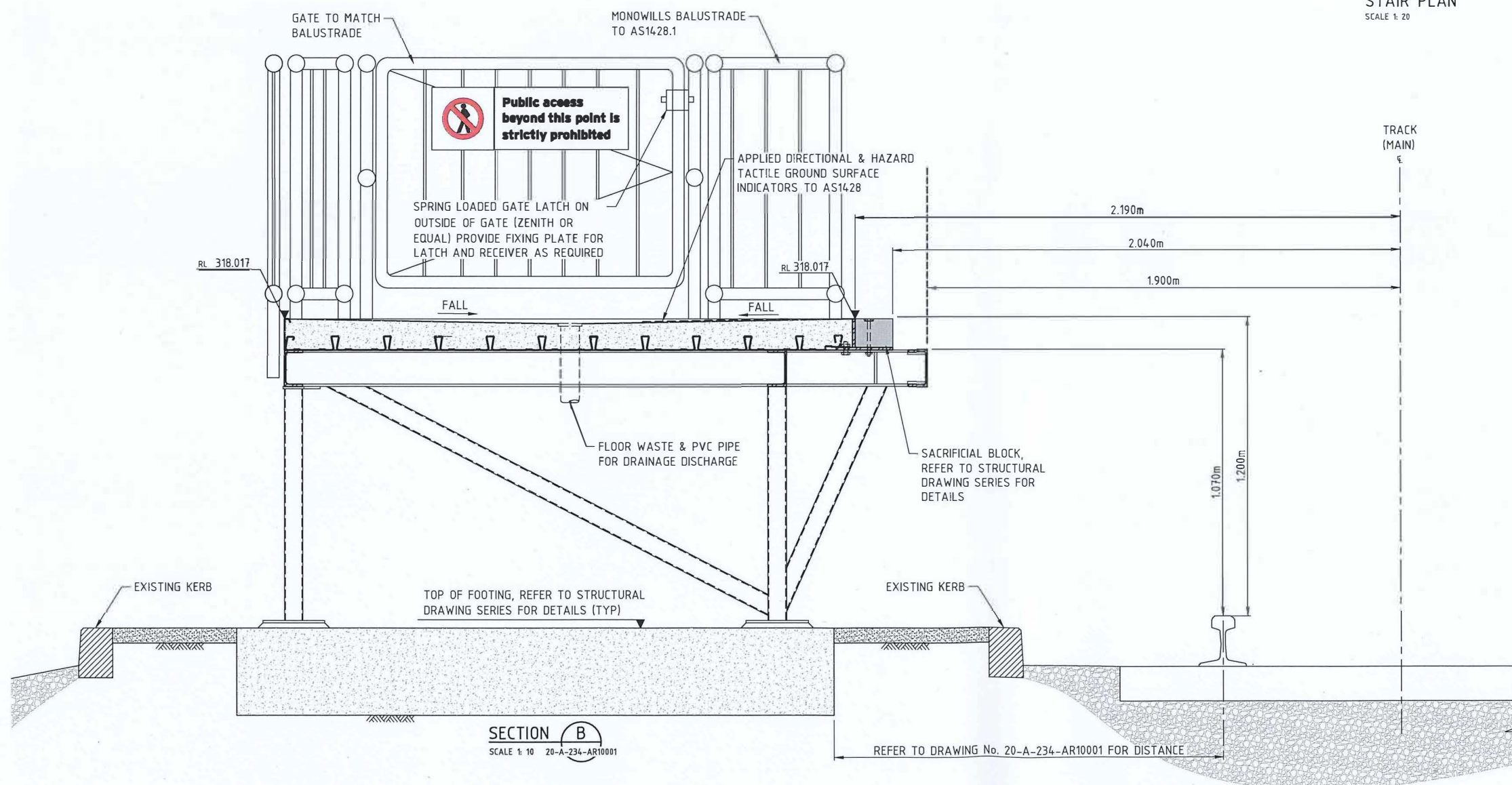
Government of Western Australia Public Transport Authority	PERTH TO KALGOORLIE LINE
MERREDIN STATION	
SOUTHERN PLATFORM	
SITE PLAN - TGS1 & PLATFORM ELEVATIONS	
PTA Drawing No: 20-A-234-AR10002	Rev: A



SECTION A
SCALE 1:20 20-A-234-AR10001



STAIR PLAN
SCALE 1:20



SECTION B
SCALE 1:10 20-A-234-AR10001

ALL STRUCTURAL ELEMENTS, REFER TO STRUCTURAL DRAWING SERIES FOR DETAILS

DETAILED DESIGN

REV	DATE	ISSUED FOR 100% DETAILED DESIGN	WZ	WZ	DB	DB
A	09.02.24		DSN	DRN	CHK	APP
ORIG SIZE		AMENDMENT		This document must not be copied without PTA's written permission, and the contents thereof must not be imparted to a third party nor be used for any unauthorised purpose.		
A1		AT ORIGINAL PLOT SIZE		CAD DRAWING PATHNAME L:\03 - AutoCAD\New Standards - Nov 2019\PTA Drawing Sheets - General\PTA_A1_Sheet.dwg		

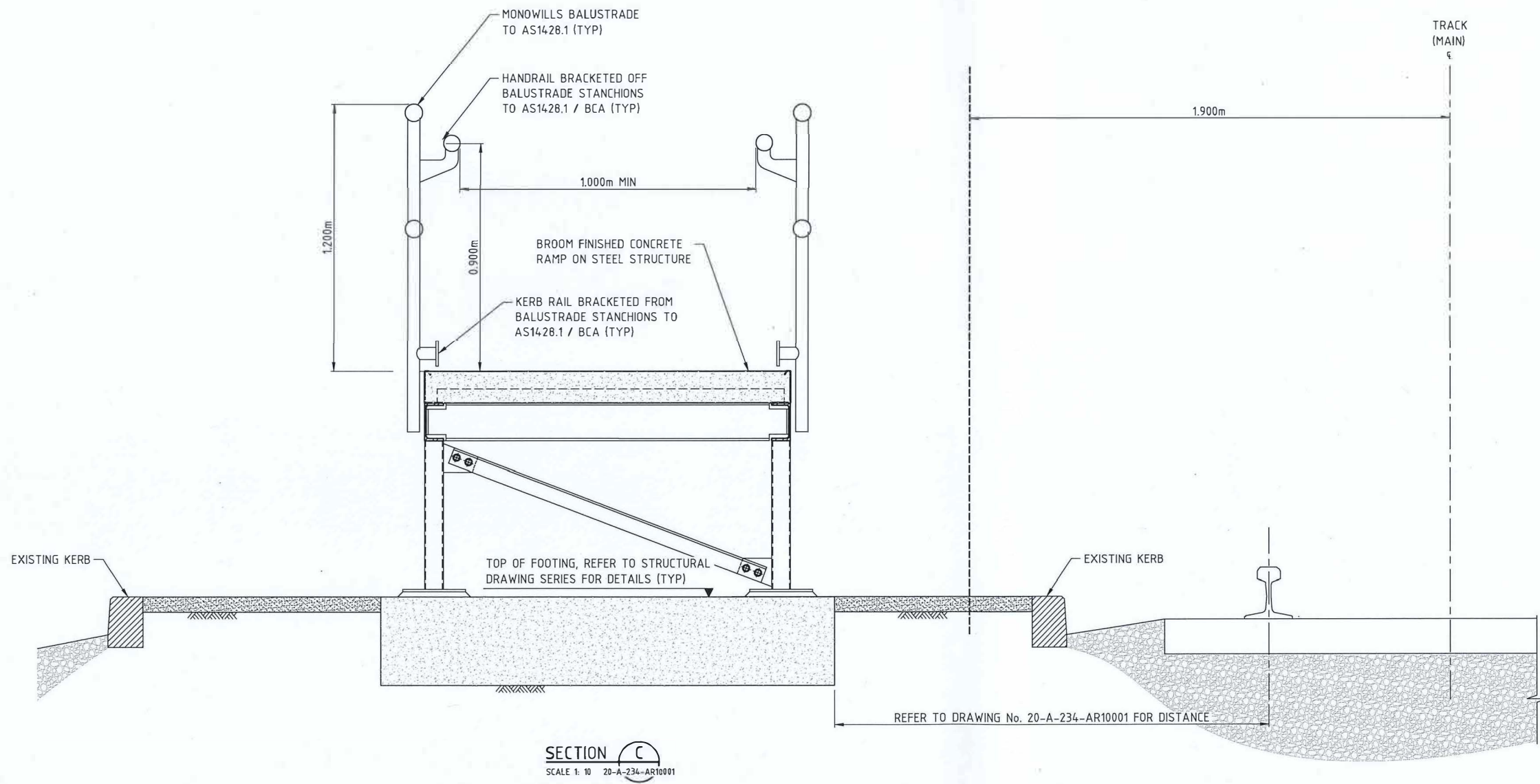


REFERENCES	
XR205_DETAILS_20231120	

SCALE	1:20 1:10 (@ A1)
DATUM	HORIZONTAL: MERREDIN94 VERTICAL: AHD71

DESIGNED	WZ
DRAWN	WZ
CHECKED	DB
APPROVED	<i>[Signature]</i>
DATE	9/2/24

Government of Western Australia Public Transport Authority		PERTH TO KALGOORLIE LINE	
MERREDIN STATION SOUTHERN PLATFORM TYPICAL DETAILS - SHEET 1			
PTA Drawing No: 20-A-234-AR10003			Rev: A



SECTION C
SCALE 1: 10 20-A-234-AR10001

ALL STRUCTURAL ELEMENTS, REFER TO STRUCTURAL DRAWING SERIES FOR DETAILS

DETAILED DESIGN

REV	DATE	ISSUED FOR 100% DETAILED DESIGN	WZ	WZ	DB	DB
AMENDMENT	DSN	DRN	CHK	APP		
A	09/02/24	ISSUED FOR 100% DETAILED DESIGN	WZ	WZ	DB	DB
ORIG SIZE: A1 AT ORIGINAL PLOT SIZE						


SMC
 Member of the Surbana Jurong Group


This document must not be copied without PTA's written permission, and the contents thereof must not be imparted to a third party nor be used for any unauthorised purpose.

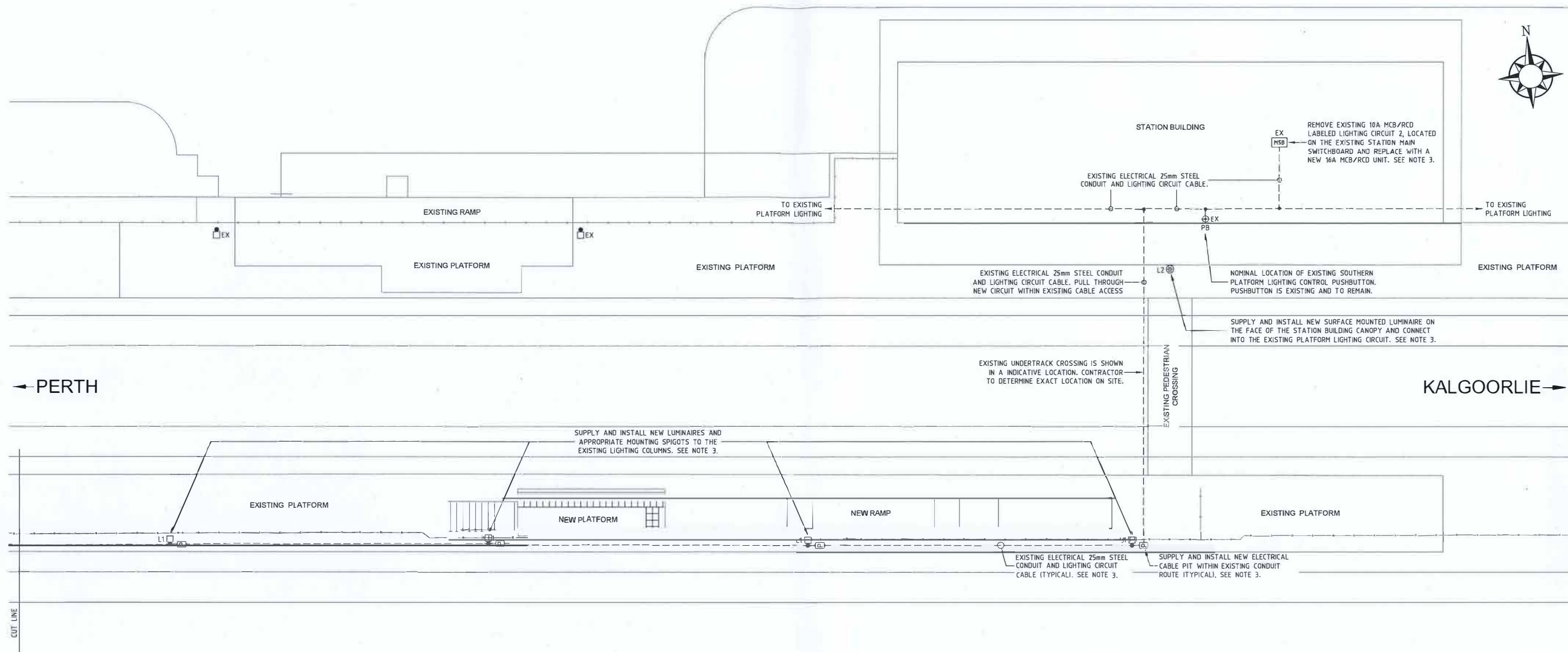
REFERENCES
XR205_DETAILS_20231120

SCALE : 1 : 10
[@ A1]

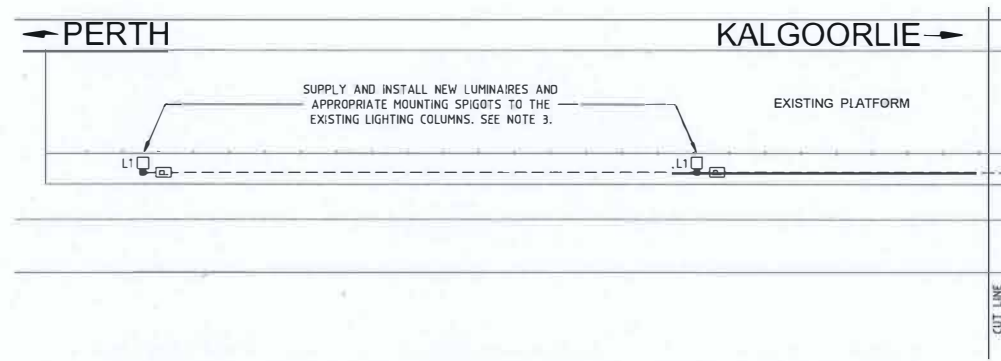
DATUM
HORIZONTAL: MERREDIN94
VERTICAL: AHD71

DESIGNED	WZ
DRAWN	WZ
CHECKED	DB
APPROVED	<i>[Signature]</i>
DATE	9/2/24

	PERTH TO KALGOORLIE LINE
MERREDIN STATION SOUTHERN PLATFORM TYPICAL DETAILS - SHEET 2	
PTA Drawing No: 20-A-234-AR10004	Rev: A



SOUTHERN PLATFORM PLAN



SOUTHERN PLATFORM PLAN - CONTINUATION

- DRAWING LIST**
- | DRAWING No. | DRAWING TITLE |
|-----------------|---|
| LCE22824-SK-E01 | SITE PLAN, DRAWING LIST AND LEGEND OF SYMBOLS |
| LCE22824-SK-E02 | SPECIFICATION NOTES |
| LCE22824-SK-E03 | LIGHTING DESIGN CALCULATION POINTS |
- LEGEND**
- STATION MAIN SWITCHBOARD
 - SINGLE DISCHARGE TYPE LUMINAIRE AND LIGHTING COLUMN - 'V' INDICATES VARIANT.
 - LED LUMINAIRE SURFACE MOUNTED. 'V' DENOTES VARIANT.
 - RECTANGULAR CABLE ACCESS PIT. 'V' DENOTES SERVICE IIE: P = POWER/ELECTRICAL SYSTEMS, C = COMMUNICATION SYSTEMS. SEE DRAWING EG5003 FOR INSTALLATION REQUIREMENTS.
 - EXISTING ELECTRICAL SYSTEMS CONDUIT/S.
 - EX DENOTES EXISTING TO REMAIN.

- LIGHTING VARIANTS**
- L1 THE LUMINAIRE SHALL BE A 63W LED STREET LIGHTING STYLE LUMINAIRE WITH ALUMINIUM BODY, IP67 PROTECTION RATING, S11 LUMINAIRE OPTIC, 4000°K COLOUR TEMPERATURE, ZHAGA CONSORTIUM APPROVED AND SILVER POWDERCOAT FINISH - MONDOLUCE "GUZZINI STREET 63W LED PRODUCT CODE: EX14" WITH MATCHING DIE CAST ALUMINIUM POLE TOP ADAPTOR.
THE EXISTING LIGHTING COLUMN IS TO REMAIN ONLY THE LUMINAIRE AND MOUNTING ARRANGEMENT IS TO BE MODIFIED TO ACCOMMODATE THE NEW POLE TOP ADAPTOR.
- L2 THE LUMINAIRE SHALL BE A 50W LED SURFACE MOUNTED LUMINAIRE CREE THE EDGE SERIES WITH MODULAR CONSTRUCTION, DIE-CAST ALUMINIUM BODY, IP66 PROTECTION RATING, TYPE IV MEDIUM DISTRIBUTION, 4000°K COLOUR TEMPERATURE, ZHAGA CONSORTIUM APPROVED AND SILVER POWDERCOAT FINISH - MONDOLUCE "CREE FLD-EDG-70-AA-02-E-EL-SV".
INSTALL THE LUMINAIRE SURFACE MOUNTED ON THE FACE OF THE STATION BUILDING CANOPY IN THE LOCATION SHOWN.

- NOTES**
- SEE DRAWING LCE22824-SK-E02 FOR SPECIFICATION NOTES.
 - STATION WILL REMAIN OPERATIONAL DURING THE WORKS AND HENCE THE STATION LIGHTING AND POWER SYSTEMS ARE REQUIRED TO BE FULLY OPERATIONAL ON ALL NIGHTS.
 - SUPPLY AND INSTALL MODIFICATIONS TO THE EXISTING SOUTHERN PLATFORM LIGHTING INSTALLATION TO PROVIDE THE NEW ARRANGEMENT AS SHOWN, INCLUDING:
 - REMOVE EXISTING 10A MCB/RCD LABELED LIGHTING CIRCUIT 2 AND REPLACE WITH NEW 16A MCB/RCD TO SUPPLY NEW REPLACEMENT LUMINAIRES.
 - REMOVE ASSOCIATED ELECTRICAL CABLEING SUPPLYING THE EXISTING EXTERNAL SOUTHERN PLATFORM LIGHTS LABELED LIGHTING CIRCUIT 2 ORIGINATING FROM THE STATION MAIN SWITCHBOARD AND REPLACE WITH NEW 2c + E 4sqmm Cu PVC/PVC CABLEING FOLLOWING CABLE RETICULATION ROUTE TO NEW REPLACEMENT LUMINAIRES SHOWN.
 - LIGHTING COLUMNS ARE TO REMAIN IN THE EXISTING LOCATIONS. ONLY THE LUMINAIRES AND MOUNTING ARRANGEMENTS ARE TO BE MODIFIED.
 - SUPPLY AND INSTALL NEW REPLACEMENT LED LUMINAIRES AND MOUNTING ARRANGEMENTS IN EXISTING LOCATIONS SHOWN.
 - SUPPLY AND INSTALL NEW LOCKABLE POWER/ELECTRICAL SYSTEMS CABLE PITS, CONNECTED INTO THE EXISTING PLATFORM LIGHTING/CONDUIT ROUTE.
 - SUPPLY AND INSTALL NEW LUMINAIRE TO FACE OF EXISTING STATION BUILDING CANOPY AND CONNECT INTO THE EXISTING PLATFORM LIGHTING CIRCUIT.
- NEW LIGHTING CIRCUIT CABLEING SHALL BE 2c + E 4sqmm Cu PVC/PVC.
EXISTING LIGHTING CIRCUIT CABLEING IS BELIEVED TO BE 2c + E 2.5sqmm Cu PVC/PVC.
CONTRACTOR TO DETERMINE EXACT SIZE ON SITE.

REV	DATE	ISSUED FOR 100% DETAILED DESIGN	ASW	ASW	DF	DB
A	09.02.24	ISSUED FOR 100% DETAILED DESIGN	ASW	ASW	DF	DB
AMENDMENT			DSN	DRN	CHK	APP

ORIG SIZE A1

0 10 20 30 40 50 100mm
AT ORIGINAL PLOT SIZE

This document must not be copied without PTA's written permission, and the contents thereof must not be imparted to a third party nor be used for any unauthorized purpose.



REFERENCES	SCALE	DESIGNED
	1:100 @ A1	ASW
	DATUM	DRAWN ASW
	HORIZONTAL: PCG94	CHECKED DF
	VERTICAL: AHD71	APPROVED DB
		DATE 09.02.24

Government of Western Australia
Public Transport Authority

PERTH TO KALGOORLIE LINE

MERREDIN STATION SOUTHERN PLATFORM
ELECTRICAL SERVICES
SITE PLAN, DRAWING LIST AND LEGEND OF SYMBOLS
PTA Drawing No: 20-A-234-EG10000 | Rev: A

