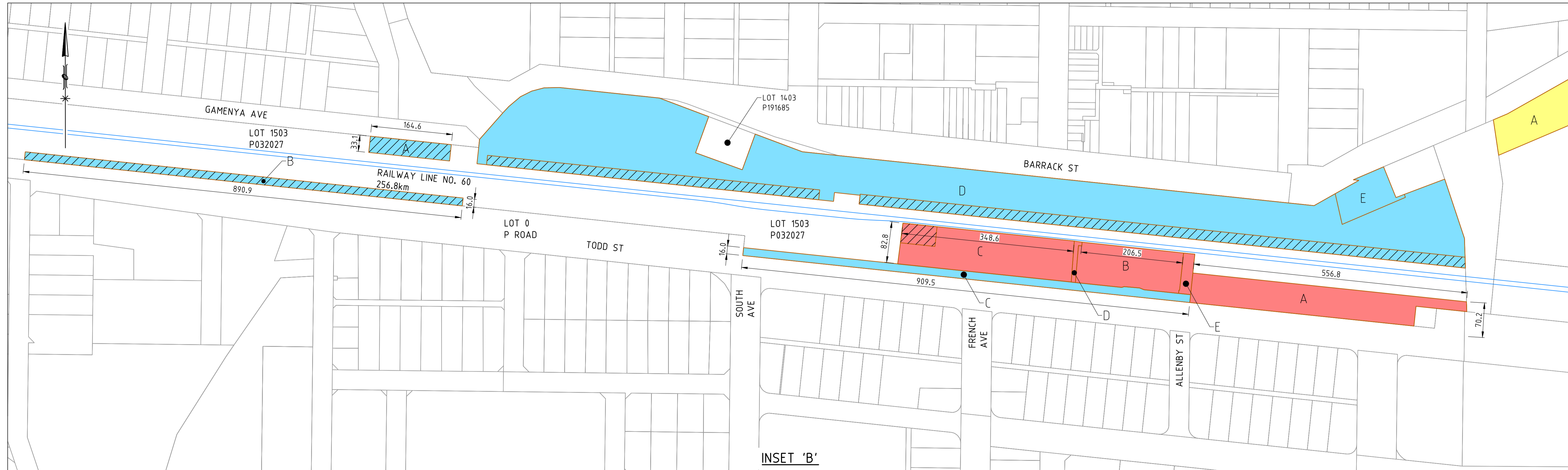
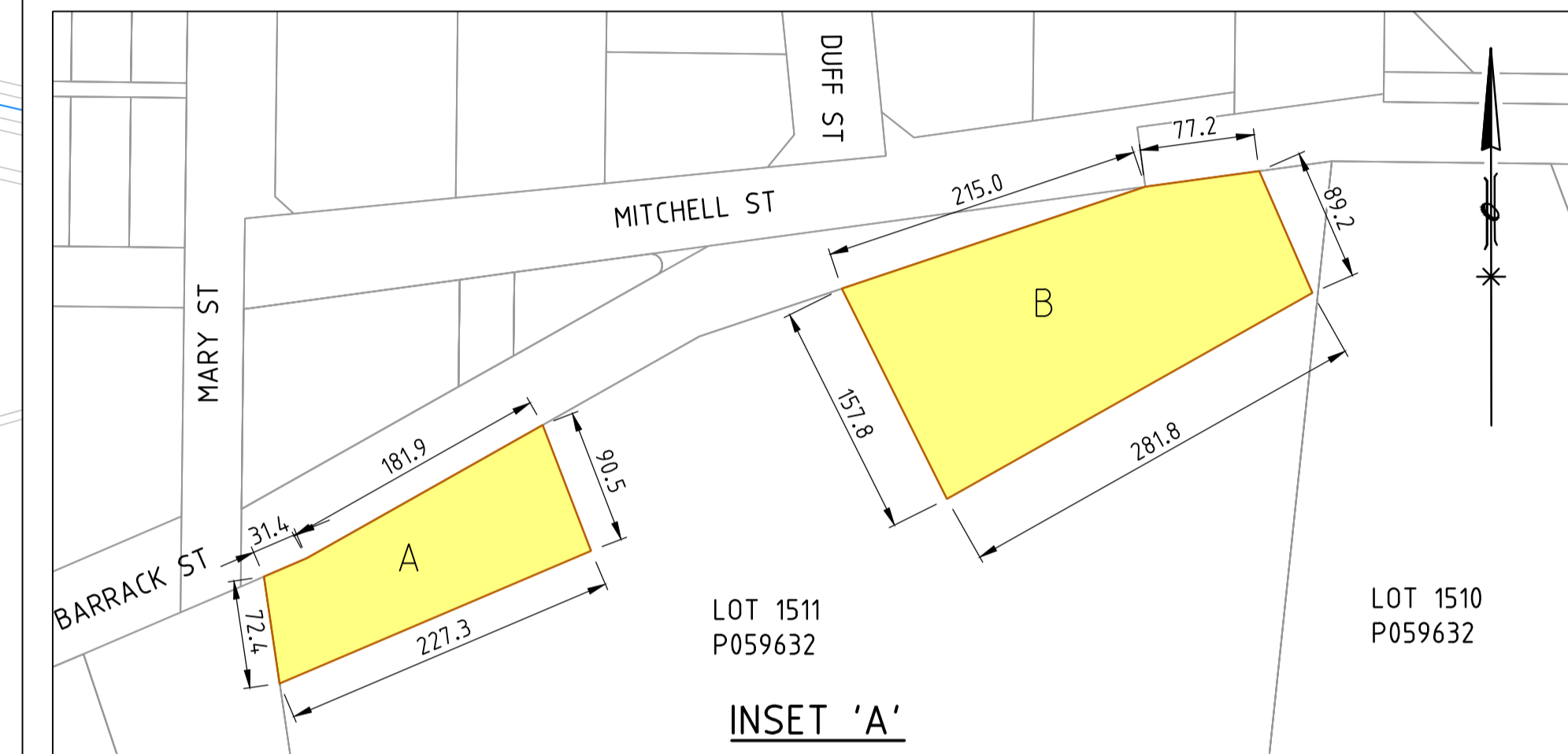


LEGEND		
 L7465	A - FORMER L6918 - AREA = 7,346m ²	
	B - FORMER L2966 - AREA = 4,338m ²	
	C - FORMER L2966 - AREA = 7,289m ²	
	D - AREA = 197m ²	
	E - AREA = 478m ²	
	TOTAL - AREA = 19,647.88m ²	
 L7466	A - FORMER L2577 - AREA = 4304m ²	
	B - FORMER L5317 - AREA = 9157m ²	
	TOTAL - AREA = 13,461.20m ²	
 L7467	A - FORMER L1758 - AREA = 1363m ²	
	B - FORMER L1790 - AREA = 3,564m ²	
	C - FORMER L1790 - AREA = 3,661m ²	
	D - FORMER L2824 - AREA = 5,425.4m ²	
	E - SURPLUS LAND - AREA = 2,061m ²	
	TOTAL - AREA = 65,231.33m ²	
 IN CORRIDOR LAND		



REV	DATE	AMENDMENT	DSN	DRN	CHKD	APP
D	28.04.22	ADDED AREA D & E TO L7465			AK	
C	01.06.17	L7466 L7467 AMENDED			LV	
B	20.04.17	L7466 AMENDED			OS	
A	13.02.17	L7465 L7466 L7467			OS	

REFERENCE DRGS	
XR Exi BDY Reserve ARC MGA94z50 151116	

SCALE :	1:2000 (@ A1)
DATUM :	HORIZONTAL: MGA50 VERTICAL: AHD71
DOC REVIEW NOTE No.	

	PROPERTY MANAGEMENT
	LEASE OF LAND TO THE SHIRE OF MERREDIN COMMUNITY PURPOSE
EXECUTIVE DIRECTOR PTA Division / External Company DATE	PTA Drawing No: L7465 L7466 L7467 REV : D