

SHIRE OF MERREDIN
ANNUAL REPORT
2016/2017



SHIRE OF
MERREDIN
INNOVATING THE WHEATBELT

CONTENTS

| | |
|--|----|
| About Us | 4 |
| Our Values | 5 |
| Our Vision | 6 |
| Our Mission | 6 |
| Our Community Vision | 7 |
| Our Strategic Priorities | 7 |
| Fast Facts..... | 8 |
| President's Message..... | 9 |
| CEACA Inc. | 9 |
| Festa Italiana | 9 |
| Merredin's Green Credentials | 9 |
| Looking Forward..... | 10 |
| Closing Acknowledgements | 10 |
| Chief Executive Officer's Message..... | 11 |
| Belgravia Leisure and the Merredin Regional Community & Leisure Centre | 11 |
| Merredin Regional Library Relocation and Official Opening | 11 |
| CBD Upgrade – Stage 1 | 12 |
| Sale of Land – Whitfield Way Stage 2..... | 12 |
| Closing Acknowledgments | 12 |
| Our Council..... | 14 |
| Organisational Structure..... | 15 |
| Compliance | 16 |
| Access and Inclusion Plan | 16 |
| Record Keeping | 16 |
| Councillor Remuneration | 16 |
| Compliance Audit Return..... | 17 |
| Completion of Primary and Annual Returns | 17 |
| Local Law Review | 17 |
| Register of Complaints of Minor Breach | 17 |
| Freedom of Information and Public Interest Disclosure | 18 |
| Human Resources | 18 |
| National Competition Policy..... | 18 |
| Delegations Review | 18 |
| Executive Remuneration..... | 18 |
| Traffic and Driver's Licensing | 19 |
| Integrated Strategic Planning and Reporting Framework | 20 |

| | |
|---|-----------|
| Our Progress of Strategic Priorities | 21 |
| Community Funding and Support | 25 |
| Community Grants..... | 25 |
| Support for Community Events, Organisations and Residents..... | 26 |
| Grants and Funding..... | 27 |
| Directorate Reports..... | 28 |
| Development Services..... | 28 |
| Engineering Services | 31 |
| Community Services | 34 |
| Financial Statements | 47 |



ABOUT US

The Shire of Merredin covers an area of 3,372sq kms and incorporates the townsites of Burracoppin, Hines Hill and Muntadgin and the localities of Goomarin, Korbel, Nangeenan, Nokanning, Norpa, Nukarni, South Burracoppin and Tandegin.

Merredin was gazetted as a townsite on 16 March 1891, with the first Merredin Road Board being established in 1911-12 and the area was renamed the Shire of Merredin on 1 July 1961.

Merredin is the regional centre for the Central East Wheatbelt and services a hinterland of approximately 15,000 people.

The Shire is bounded by the Shires of Bruce Rock, Kellerberrin, Narembreen, Nungarin, Westonia and Yilgarn.

Our Council strives to encourage a vibrant community that offers a comprehensive range of local and regional services. Its aim is to work with all communities in the Central Wheatbelt to support quality of life as well as economic and social development within the region.

OUR VALUES



INTEGRITY

Act in an honest, open and accountable manner in all of our activities ensuring they are equitable and socially just.



PARTICIPATION

Provide genuine opportunities for informed community participation in decision making in a framework of local democracy.



SERVICE

Be sensitive and responsive to the needs and aspirations of our community and focusing on customer satisfaction and value for money.



LEARNING

Continue learning from training, our actions and experiences, and continually seeking better and more innovative ways of doing things.



VALUING PEOPLE

Value the contribution the people inside and outside the organisation make to the achievement of the Shire's vision.



COMMITMENT

Ensure our actions serve the people of Merredin and their long-term interests.



SUSTAINABILITY

Have a global perspective and ensure our actions minimise the impact on the environment and the resources available for future generations.

A full-page photograph of a park. In the foreground, there's a large, light-colored tree trunk on the left. The middle ground features a green lawn, a pond with a small fountain spraying water, and several other trees. The background shows more trees under a clear blue sky.

OUR VISION

To be a vibrant regional centre offering a comprehensive range of regional services which improve the quality of life of the people within the shire and Central Wheatbelt.

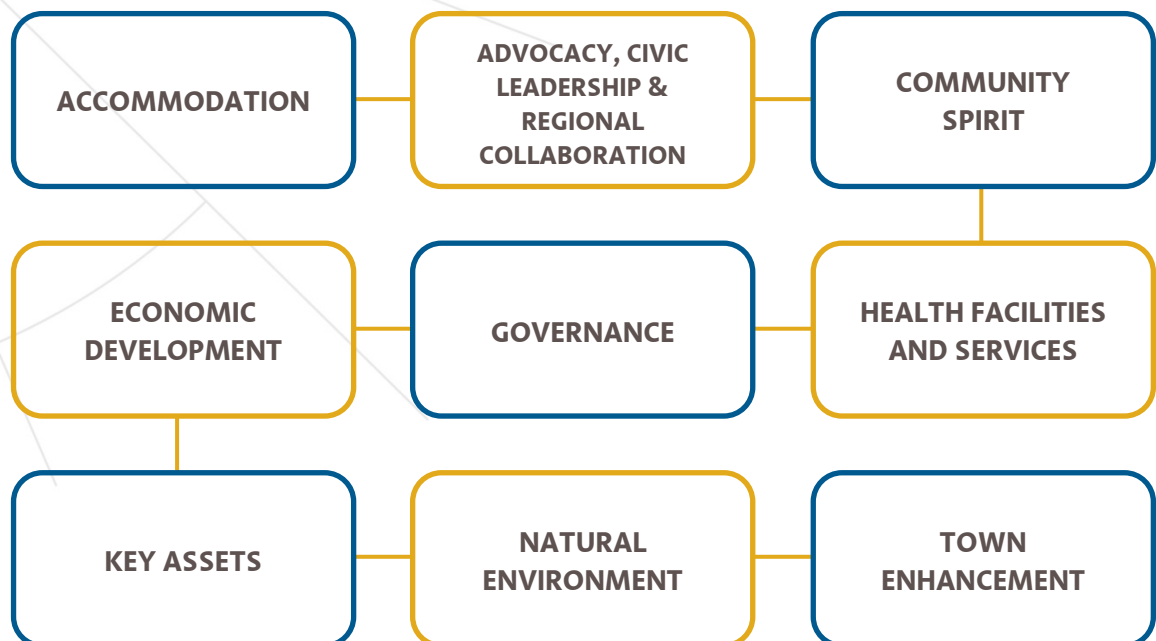
OUR MISSION

To work with all communities in the Central Wheatbelt to support social and economic development

OUR COMMUNITY VISION



OUR STRATEGIC PRIORITIES



FAST FACTS



Total Area
3,372km²



Population
3,350



Dwellings
1,635



Rates Revenue
\$3,896,129



Shire Employees
45



Sealed Roads
565km



Unsealed Roads
816km



Parks & Gardens
21 ha



Schools
2



Libraries
1



Child Care
2



Sporting Clubs
23

Where did my rates go?
For every \$100 the Shire of Merredin spends:

\$37.22

On roads

\$6.14

On Law, Order
and Public
Safety

\$2.36

On Health

\$1.24

On Education
and Welfare

\$2.33

On Housing

\$9.08

On Community
Amenities

\$26.62

On Recreation
and Culture

\$4.51

On Governance

\$8.18

On Economic
Services

\$1.22

Other

PRESIDENT'S MESSAGE



“It’s been a year of more important developments for Merredin, and the Wheatbelt community as a whole”

CEACA Inc.

I’m very pleased to report that the application made to the Royalties for Regions Growing our South Initiative for \$19,986,439 as Stage 2 of the CEACA Inc Seniors Housing project was successful, with the funds received in July 2017. This will enable a further 21 lots being prepared across the CEACA region (including 12 in Merredin) and the construction of 75 independent living units (including 28 in Merredin).

At its May 2017 meeting Council approved the development application for the CEACA Inc units on the old North Merredin Primary School site. The tender for construction of the units is expected to be advertised in July 2017 and it is hoped construction can commence before the end of the calendar year.

FESTA ITALIANA

In October 2016 Merredin turned green, white and red when it paid homage to our resident Italian families with the inaugural celebration weekend which was Festa Italiana.

The weekend incorporated the Elders Golden Sausage, Merredin Fine Arts Society Art Exhibition, cooking demonstrations, sports, family histories and a wonderful evening of food, wine and entertainment at Cummins Theatre. The weekend finished with church services, tours of the town and lunch.

Feedback from the event was fantastic with many family members returning to Merredin to reminisce and catch up with old friends. Festa Italiana returns again in 2018.

MERREDIN’S GREEN CREDENTIALS

Merredin is growing its reputation as a renewable energy hotspot with plans for a \$160 million 120MW solar farm located on Robartson Road approved at Council’s March 2017 meeting. The proposal then received Joint Development Assessment Panel approval in June 2017.

The development will be the largest in the state once built. Construction is expected to commence in mid-2018 and be ready for commissioning in early 2019 when it can start producing enough electricity for 42,000 homes.

LOOKING FORWARD

The next local government elections will be held on Saturday 21 October 2017. At its December 2016 meeting Council resolved that the WA Electoral Commission (WAEC) would again be responsible for the election by way of postal vote.

By making the WAEC responsible for the election, Council can ensure that the election is conducted independently and with impartiality. Additionally, postal elections are generally more convenient for many electors and typically result in a higher rate of voter participation than in-person ballots.

4 positions on Council will be available and while voting in local government elections is voluntary, I would encourage the community to have their say in voting on who represents them.

If you're passionate about your community why not stand for one of those 4 positions on Council and make a real difference? As a local government councillor you will be responsible for representing the long-term interests of our community on a range of matters, including community wellbeing and development, sport and recreation, public health and safety, essential community infrastructure and future planning.

CLOSING ACKNOWLEDGEMENTS

On behalf of Council, and the community, I would like to thank all the staff at the Shire of Merredin for the ongoing service and commitment they provide to our Shire. I would also like to thank my fellow Councillors for your efforts in moving Merredin forward this past year. And, of course to the residents, ratepayers, business owners and all other stakeholders within the Shire, thank you for your continued support and I look forward to working with you all over the coming year.

Cr Ken Hooper
Shire President

CHIEF EXECUTIVE OFFICER'S MESSAGE



“It has been a year of change for the Shire of Merredin, with some welcome opportunities”

BELGRAVIA LEISURE AND THE MERREDIN REGIONAL COMMUNITY & LEISURE CENTRE

The Merredin Regional Community and Leisure Centre (MRCLC) commenced operations in 2007. From its opening operational challenges have been experienced and managing operations to ensure consistent and sustainable service delivery has been difficult. This has resulted in missed opportunities to increase its usage.

Throughout 2015/16, operations were closely analysed to include the review of service delivery, business plan, management plan and financial performance. Upon completion of the review it was determined that an alternative method of management and operation could be a viable option.

Following a tender process, Belgravia Leisure was appointed to take over the management of MRCLC from 1 October 2016. Belgravia Leisure is an aquatic, fitness and recreation management specialist. Belgravia was selected because the company is able to bring benefits to Merredin and the regional community with its broad variety of skills and experience in sporting and leisure aspects of community life.

Both Council and staff look forward to working with Belgravia Leisure to increase the usage and range of activities available at the MRCLC.

MERREDIN REGIONAL LIBRARY RELOCATION AND OFFICIAL OPENING

Following a full refurbishment, the Merredin Regional Library was very busy on Thursday 7 July when 76 locals and ex-locals helped officially open the library in the old North Merredin Primary School.

Past and present librarians were joined by members of Parliament, the Wheatbelt Development Commission, the State Library WA, Shire Councillors and staff during the event which included entertaining recollections from Ms Esther Robartson as a past student and later as a teacher.

The library relocated to its new home from its Queen Street address as the new building is more suitable. Further plans include a memorabilia room and general meeting space.

CBD UPGRADE – STAGE 1

Through the Wheatbelt Development Commission's Wheatbelt Regional Grants Scheme an application for funding of \$300,000 was made to commence works on Stage 1 of the Merredin CBD upgrade.

The CBD redevelopment project is a staged plan that aims to improve the appearance and functionality of the Barrack and Bates Street shopping and business precinct. While only partially funded (\$150,000 was approved) the project, which commenced in April 2017, included resealing/resurfacing of the roads and car parks, re-curbings and re-lining of parking spaces.

Barrack Street, Bates Street, Mitchell Street, and Fifth Avenue were some of the roads to be resurfaced, and the Barrack Street car park also received some attention. With high vehicle, foot and trolley traffic in the vicinity of Merredin IGA, the adjacent car park has been reinforced to ensure it can cope with greater usage.

Feedback on the works has been positive and it has pleasingly enhanced the visual amenity of the CBD area.

SALE OF LAND – WHITFIELD WAY STAGE 2

In March 2017 Council advertised Tender T2017086 for the sale of vacant residential land in Whitfield Way Stage 2 and Caridi Close.

As a result, 3 lots in Whitfield Way Stage 2 were subsequently sold, which provided a welcome revenue boost for Council.

Council will continue to market the remaining lots and looks forward to further development in the subdivision.

CLOSING ACKNOWLEDGMENTS

It has again been a pleasure to be part of the Shire, to work with Councillors and staff in pursuing a vibrant and bright future for the Shire and I would like to thank all Councillors and staff for their dedication during the last financial year.

Greg Powell
Chief Executive Officer



OUR COUNCIL



Cr Ken Hooper
President
Expiry of Term:
19 October 2019



Cr Mark Crees
Deputy President
Expiry of Term:
19 October 2019



Cr Brad Anderson
Expiry of Term:
19 October 2019



Cr Caroline Blakers
Expiry of Term:
21 October 2017



Cr Leah Boehme
Expiry of Term:
19 October 2019



Cr Matt Crisafio
Expiry of Term:
19 October 2019



Cr John Flockart
Expiry of Term:
21 October 2017



Cr Mal Willis
Expiry of Term:
21 October 2017

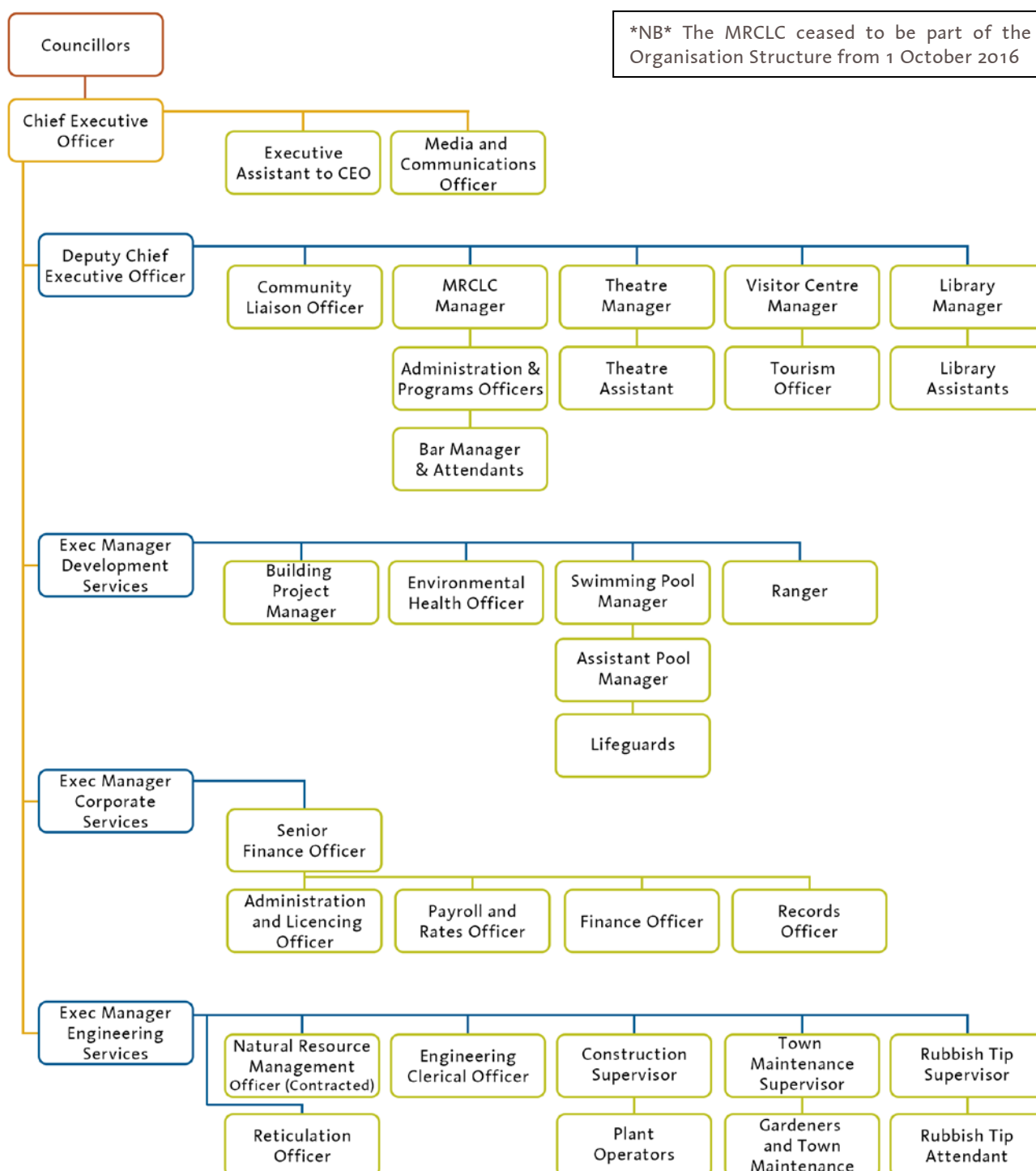


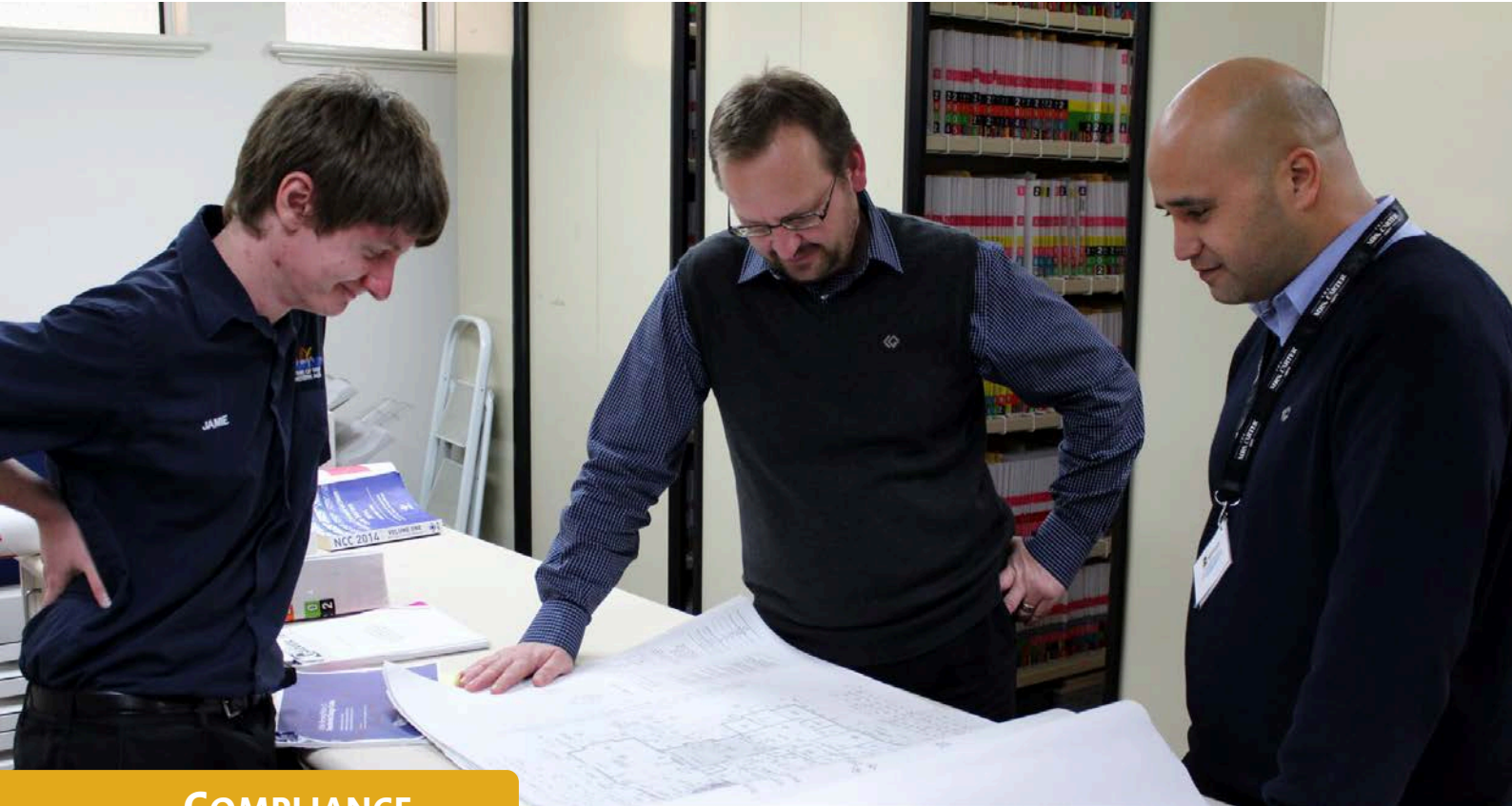
Cr Maria Young
Expiry of Term:
21 October 2017



ORGANISATIONAL STRUCTURE

NB The MRCLC ceased to be part of the Organisation Structure from 1 October 2016





COMPLIANCE

ACCESS AND INCLUSION PLAN

The *Disabilities Services Act 1993* requires Council to report on its Access and Inclusion Plan (AIP) achievements within its Annual Report. Works conducted during the year include the redevelopment of the public parking areas adjacent to the Central Wheatbelt Visitor Centre which allows for easier access from the parking area to the adjacent shops by people with a disability.

RECORD KEEPING

The Shire's reviewed Record Keeping Plan, as adopted by Council at its September 2015 meeting, is in operation - as far as all incoming correspondence is captured onto the electronic records system and then allocated to the relevant officer for attention whilst the hardcopy is filed. Work continues in educating officers of the procedure for outgoing correspondence via email but most outgoing hardcopy letters are captured onto the electronic system.

Work has also commenced with regard to capturing archived "permanent records" onto the electronic system.

The archived hardcopy records are temporarily being held in a secure building, however, this is not dust free nor fire protected.

COUNCILLOR REMUNERATION

In 2016/17 the following allowances were paid to Councillors:

| RECIPIENT | AMOUNT |
|--|----------|
| President (including the President's Allowance) | \$21,373 |
| Deputy President (including the Deputy President's Allowance) | \$11,353 |
| Other Councillors | \$8,013 |

COMPLIANCE AUDIT RETURN

All local governments are required to carry out an annual Compliance Audit Return (CAR) for the period 1 January to 31 December as specified by the *Local Government Act 1995*. The CAR includes a range of compliance categories to be met.

The completed CAR was considered by the Audit Committee and received by Council at its February 2017 meeting (CMRef 81921) and was subsequently submitted to the Department of Local Government prior to 31 March 2017 in accordance with Regulations 14 and 15 of the *Local Government (Audit) Regulations 1996*.

COMPLETION OF PRIMARY AND ANNUAL RETURNS

In accordance with Sections 5.75 and 5.76 of the *Local Government Act 1995* all relevant persons lodged an Annual Return by the due date of 31 August 2016 and a primary return within 3 months of their start date.

All returns are managed through the Attain system and are available for viewing by members of the public upon request.

LOCAL LAW REVIEW

The Shire commenced the 8 year review of its Local Laws in 2014, with a Discussion Paper developed and discussed at Council's January 2015 meeting. At that meeting, in accordance with Section 3.16(2) of the *Local Government Act 1995*, Council subsequently resolved to proceed with and advertise the review of the Local Laws (CMRef 81507).

Following the statutory process, at its March 2017 meeting Council adopted the following Local Laws and amendment Local Laws (CMRef 81949 - 81950):

- Activities in Thoroughfares and Public Places and Trading Amendment Local Law;
- Bush Fire Brigades Amendment Local Law;
- Cemeteries Amendment Local Law;
- Fencing Amendment Local Law;
- Local Government Property Amendment Local Law; and
- Standing Orders Local Law.

The amendments were published in a Special Gazette on 26 April 2017 and came into effect on 11 May 2017.

Work continues on the review of the Health Local Law, Dogs Local Law and the Animals Environment and Nuisance Local Law.

REGISTER OF COMPLAINTS OF MINOR BREACH

In accordance with Sections 5.53(2) and 5.121 of the *Local Government Act 1995*, the Annual Report is required to disclose the number of complaints of minor breach received each year.

There were 0 complaints received in 2016/17.

FREEDOM OF INFORMATION AND PUBLIC INTEREST DISCLOSURE

The Western Australian *Freedom of Information Act 1992* provides the public the right to apply for access to documents held by the Shire. An applicant's right to access cannot be affected by their reason for wishing to obtain the information, nor is there a need for an applicant to provide a reason as to why access is being sought. Schedule 1 of the *Freedom of Information Act 1992* provides what information is exempt from the requirement to release documents to the public.

The Shire received 2 applications in the current reporting period.

HUMAN RESOURCES

During 2016/17 the number of staff employed with the Shire was 45 full time equivalents.

NATIONAL COMPETITION POLICY

Local governments are required to apply the principle of competitive neutrality to all business activities generating user-pays income in excess of \$200,000.

The principle of competitive neutrality is that Government businesses should not enjoy a competitive advantage, or disadvantage, simply as a result of their public sector ownership. Annual Reports must show that a public benefit test has been conducted for all significant businesses activities to determine if competitive neutrality is in the public interest.

As the principles only apply to business activities that receive more than \$200,000 in annual income, of which the Shire has none, this therefore does not apply.

DELEGATIONS REVIEW

In accordance with Section 5.46 of the *Local Government Act 1995* a review was undertaken of the Shire's Delegation Register during this period, with Council adopting the review at its December 2016 meeting (CMRef 81893). The Register was added to at Council's February 2017 meeting (CMRef 81935).

EXECUTIVE REMUNERATION

Regulation 19B of the *Local Government (Administration) Regulations 1996* states the Annual Report is to include the number of employees entitled to an annual salary of \$100,000 or more, and the number of those employees with an annual salary entitlement that fall within each band of \$10,000 over \$100,000.

As at 30 June 2017 the Shire has 3 employees entitled to an annual salary more than \$100,000:

| SALARY RANGE | EMPLOYEE(S) |
|-----------------------|-------------|
| \$100,001 - \$110,000 | 2 |
| \$110,001 - \$120,000 | 0 |
| \$120,001 - \$130,000 | 0 |
| \$130,001 - \$140,000 | 0 |
| \$140,001 - \$150,000 | 0 |
| \$150,001 - \$160,000 | 0 |
| \$160,001 - \$170,000 | 0 |
| \$170,001 - \$180,000 | 1 |
| \$180,001 - \$190,000 | 0 |
| \$190,001 - \$200,000 | 0 |

TRAFFIC AND DRIVER'S LICENSING

The Shire provides licensing services on behalf of the Department of Transport. This is an invaluable core service provided to the residents of the Shire. Over 2016/17 the Licensing Centre processed a considerable number of transactions, with Council commissions totalling approximately \$75,070.



INTEGRATED STRATEGIC PLANNING AND REPORTING FRAMEWORK

In accordance with the *Local Government Act 1995*, the Shire has developed an Integrated Planning Framework that will allow us to sustainably and strategically meet the needs of our community.

The objective of the framework is to continue to improve the efficiency and effectiveness of its operations with an increased level of community engagement.

The Strategic Community Plan 2015-2026 is the plan to guide Council over the next 10 years. The Plan is broad with a long-term focus and strong emphasis on the community's aspirations, priorities and vision for the future. The Strategic Community Plan 2015-2026 informs our Strategic Resource Plan 2016-2031.

At the core of this planning framework is the Corporate Business Plan 2015-2019 which outlines in detail the projects, services, operations and performance measures required to deliver on the priorities identified in the Strategic Community Plan 2015-2026.

Shire of Merredin's Integrated Planning Framework:



OUR PROGRESS OF STRATEGIC PRIORITIES

The following tables report on the key directions of the Strategic Community Plan 2015-2026.

STATUS

✓ Completed

► Commenced

✕ No current opportunities

↻ Ongoing

Strategic Priority 1

ECONOMIC DEVELOPMENT

| INITIATIVE | STATUS | COMMENTS |
|---|--------|--|
| Strategy SP.D1.1 Implement recommendations identified in the "Growing Our Community" An Economic Development and Implementation Strategy and Central East Regional Economic Strategy | ↻ | Actioned investigations and plans to progress: <ul style="list-style-type: none"> • CBD Upgrade – Stage 1 • Formation of steering committee to promote Merredin as a hub for horticulture • Desalination Plant |
| Strategy SP.D1.2 Proactively promote Merredin as a place to live, work and invest, within and outside the community | ↻ | Some initiatives actioned included: <ul style="list-style-type: none"> • Cross Regional Promotion • Entry Attraction Signage • WA Weekender Campaign |
| Strategy SP.D1.3 Promote new commercial and industrial development through appropriate zoning of land, provision of suitable infrastructure and efficient and effective business approval processes | ↻ | Town Planning Scheme No. 6 current |
| Strategy SP.D1.4 Pursue opportunities with NBN in partnerships with other regional organisations | ↻ | Current information available on NBN website |
| Strategy SP.D1.5 Facilitate further development of local and regional tourism | ↻ | Initiatives developed include: <ul style="list-style-type: none"> • Renewal of Signage • Shade Shelter & Interpretative Signage at Visitor Centre precinct • Implementation of local tourism famils • Local Strategic Tourism Plan • Eastern Wheatbelt Tourism Plan |

Strategic Priority 2

ACCOMMODATION

| INITIATIVE | STATUS | COMMENTS |
|--|--------|--|
| Strategy SP.D2.1 Actively facilitate and develop alternative housing for professionals and workers | ✕ | No opportunities to pursue during the reporting period |

| | | |
|---|---|---|
| Strategy SP.D2.2 Collaborate and facilitate the development of aged accommodation | ↻ | Actioned: <ul style="list-style-type: none"> • Verso Report • Architectural drawings for 28 independent living units |
| Strategy SP.D2.3 Facilitate the improvement of housing conditions through: advocacy in relation to the condition of public housing, as a housing developer and in encouraging community pride | ✕ | No opportunities to pursue during the reporting period |

Strategic Priority 3

CIVIC LEADERSHIP, ADVOCACY AND REGIONAL COLLABORATION

| INITIATIVE | STATUS | COMMENTS |
|--|--------|---|
| Strategy SP.D3.1 Collaborate with neighbouring Shires (and beyond) for the benefit of the region as a whole | ↻ | WEROC Tourism App developed |
| Strategy SP.D3.2 Seek external recognition, support and funding for Merredin's ongoing development, including as a regional centre | ↻ | External recognition, support and funding secured for identified projects |
| Strategy SP.D3.3 Advocate for State infrastructure and service investments to enhance the functioning of the Eastern Wheatbelt | ↻ | Advocacy undertaken when required |

Strategic Priority 4

GOVERNANCE

| INITIATIVE | STATUS | COMMENTS |
|--|--------|--|
| Strategy SP.D4.1 Implement accountable and good governance | ↻ | Policies and procedures implemented Compliance requirements met |
| Strategy SP.D4.2 Enhance interactive communication between the Shire and the community | ↻ | Communications and Engagement Framework implemented |
| Strategy SP.D4.3 Practice prudent management of financial services | ↻ | Policies and procedures implemented Compliance requirements met |
| Strategy SP.D4.4 Develop an innovative, empowered and responsible organisation culture | ↻ | Implementation of identified strategies within the Workforce Plan |

Strategic Priority 5

HEALTH FACILITIES AND SERVICES

| INITIATIVE | STATUS | COMMENTS |
|---|--------|---|
| Strategy SP.L1.1 Continue to take a proactive advocacy role to support the provision of medical facilities and services to meet the needs of the local and regional community | 🔄 | Provision of accommodation for health professionals (lease arrangement) |
| Strategy SP.L1.2 Continue to assist with the facilitation of aged care services | 🔄 | Facilitation continuing |
| Strategy SP.L1.2 Assist with raising local awareness of what health services are available to the community | 🔄 | Health services publicised in community introduction packs |

Strategic Priority 6

KEY ASSETS

| INITIATIVE | STATUS | COMMENTS |
|---|--------|--|
| Strategy SP.L2.1 Maintain an efficient, safe and quality transport network | 🔄 | 2016/17 road and footpath program completed |
| Strategy SP.L2.2 Investigate opportunities to consolidate Shire owned facilities and collocate services | 🔄 | Community facilities review – community consultation completed |
| Strategy SP.L2.3 Develop, maintain and support appropriate recreational facilities and services through the Shire | 🔄 | Identified projects completed Maintenance of facilities and services continued |
| Strategy SP.L2.4 Partner with stakeholders to achieve greater community participation in recreational facilities and services | 🔄 | Provision of administration to support Kidsports Program Implementation of MRCLC Business and Management Plan |

Strategic Priority 7

BUILT HERITAGE

| INITIATIVE | STATUS | COMMENTS |
|---|--------|--|
| Strategy SP.L3.1 Protect and promote the Shire's diverse culture and heritage | 🔄 | Railway Rolling Stock Cover project commenced Cabinets for Library Memorabilia Room purchased |

Strategic Priority 8

TOWN ENHANCEMENT

| INITIATIVE | STATUS | COMMENTS |
|---|--------|--|
| Strategy SP.L4.1 Enhance the public amenity and functionality of Merredin | 🔄 | Planning and implementation of projects to include: <ul style="list-style-type: none">• CBD Upgrade – Stage 1• Signage renewal• Installation of Attraction Signage |

Strategic Priority 9

COMMUNITY SPIRIT

| INITIATIVE | STATUS | COMMENTS |
|--|--------|--|
| Strategy SP.I1.1 Maintain a community that is well informed, creating opportunities for community involvement and supporting a caring and health community | 🔄 | Various communication mediums utilised to ensure community is well informed on a regular basis |
| Strategy SP.I1.2 Provide services and processes to enhance public safety | 🔄 | CCTV system maintained |
| Strategy SP.I1.3 Support provision of facilities and services for arts and cultural programs | 🔄 | A variety of arts and cultural programs planned and implemented |

Strategic Priority 10

COMMUNITY SPIRIT

| INITIATIVE | STATUS | COMMENTS |
|---|--------|--|
| Strategy SP.E1.1 Minimise waste production | 🔄 | Continued investigation with ongoing public awareness and education to manage compliant waste disposal |
| Strategy SP.E1.2 Work with relevant agencies to actively encourage the adoption of efficient energy and water usage | 🔄 | Secured funding for independent water project to provide scope to extend the reticulation system |



COMMUNITY FUNDING AND SUPPORT

COMMUNITY GRANTS

Each year Council allocates funds to various not-for-profit organisations which operate within the Shire. The Community Grant Scheme is designed to provide benefits to Shire residents through recreational, sporting, social or cultural means.

The aims of the Shire of Merredin's Community Funding Program are:

1. to encourage the development of services, facilities and events that meet identified community needs;
2. to promote active participation of local residents in community initiatives and the development of skills, knowledge and opportunities;
3. to provide assistance to the community to develop initiatives and services that support the Shire of Merredin's own objectives; and
4. to enhance the image of the Shire of Merredin within the community.

In 2016/17, the Merredin Community Resource Centre received \$3,000 in cash and \$550 in-kind support towards hosting the following events for the Merredin community:

Australia Day breakfast

Seniors Luncheon

Thank a Volunteer

2x Upskilling Volunteers workshops



SUPPORT FOR COMMUNITY EVENTS, ORGANISATIONS AND RESIDENTS

The Shire provided financial support towards a number of community events including:

| RECIPIENT | AMOUNT |
|---|----------|
| Mangowine Concert | \$200 |
| Fine Arts Society Art Acquisition Prize | \$1,200 |
| Merredin Show | \$11,680 |

The Shire also provided financial support for the following organisations:

| RECIPIENT | AMOUNT |
|--|---------|
| Merredin College Scholarship | \$1,000 |
| Eastern Districts Display at Perth Royal Show | \$550 |
| John Curtin University Student Volunteer Weekend | \$600 |
| Merredin College Chaplain Program | \$3,000 |

GRANTS AND FUNDING

The Shire was successful in obtaining a range of grant funds over 2016/17 including:

| FUNDING BODY | PROJECT | AMOUNT |
|---|--|--------------|
| Royalties for Regions | Growing our South Initiative - CEACA Inc Seniors Housing | \$19,686,439 |
| | Regional Visitor Centre Sustainability Program Round 2 | \$13,725 |
| Wheatbelt Development Commission | Upgrade of CBD | \$150,000 |
| | Merredin Railway Museum – Cover of Rolling Stock | \$20,000 |
| | Water Reuse Retic Upgrade | \$25,000 |
| Department of Sport & Recreation | Kidsport Sport for All 2016/17 | \$27,000 |
| | Community Pool Revitalisation Program | \$32,000 |
| Department of Culture & the Arts | Community Engagement – Cummins Kids | \$18,313 |
| | Regional Venues Improvement Fund Round 2 Cummins Theatre | \$40,580 |
| WA Mental Health Commission | Suicide Prevention Grants – CY O'Connor Mental Health First Aid | \$20,000 |
| Lotterywest | Merredin Railway Museum Rolling Stock Cover | \$163,637 |
| | Audience Development Regional Performing Arts – Cummins Theatre | \$75,085 |
| | Furniture & Equipment Merredin Library | \$10,893 |
| | 2017/18 Community Events | \$14,850 |
| | Community Outdoor Spaces | \$10,000 |
| Department of Infrastructure & Regional Development | Shaded seating structures on way to CBD | \$7,500 |
| Country Arts WA | Senior's Week Concert | \$1,500 |
| | Small Voices Project – Cummins Theatre | \$10,700 |
| Department of Transport State NRM Office | WA Bicycle Network – Dual Use Paths | \$40,000 |
| | Overcoming barriers to baiting in the Eastern Wheatbelt | \$12,954 |
| Main Roads WA | Regional Roads Group | \$456,607 |
| | Roads to Recovery | \$875,743 |
| Collgar Community Fund | Dogs Day Out | \$2,000 |
| | Merredin Railway Museum Rolling Stock Cover | \$20,000 |
| | Festa Italiana | \$2,500 |
| | 2017/18 Community Events & Nature Playground | \$44,000 |
| Federal Assistance Grants | Commonwealth general funding allocation and roads funding | \$2,297,575 |
| Department of Local Government & Communities | Youth Development Scholarship Program | \$10,000 |
| Department of Environment & Energy | Goldfields Water Supply Scheme – National Trust – No. 4 Pump Station | \$45,800 |



DIRECTORATE REPORTS

DEVELOPMENT SERVICES

PLANNING SERVICES

The Shire of Merredin issued 31 planning approvals for the 2016/17 financial year.

A review was conducted on the Shire's Local Planning Scheme No. 6 – Local Planning Policies.

Council and the Midwest/Wheatbelt Joint Development Assessment Panel granted development approval of the \$160 million Stellata Energy Solar Farm proposal

BUILDING SERVICES

The Shire of Merredin issued 49 building permits for the 2016/17 financial year.

The Shire utilises a registered builder in the position of Building Project Manager who acts as the Main Contractor in any building capital works and coordinates the yearly maintenance program.

During the reporting period the following major projects were undertaken:

- Ongoing Strategic Planning of Council's building assets;
- Resurfacing of the external basketball courts at the MRCLC;
- Upgrades/repairs to the Burracoppin Hall;
- Resurfacing of the water slide at the Merredin District Olympic Swimming Pool;
- Construction of the shade structure outside the Central Wheatbelt Visitor Centre;
- Release of tender for the Merredin Railway Museum Rolling Stock Cover project;

- Demolition of outbuildings at the North Merredin Primary School site for the CEACA Inc project;
- Alterations to the Cummins Theatre backstage area to allow a higher occupancy number for the stage; and
- Completion of the Hockey/Tennis captains room at the MRCLC.

RANGER SERVICES

The Shire Ranger has become more visible within the community and having a more proactive role in relation to laws enforcement, dog related issues, illegal dumping and bush fire regulation enforcement.

In the 2016/17 bush fire period 23 infringements were issued in relation to noncompliance under Section 33(3) of the *Bush Fires Act 1954*, for failure to comply with the Shire of Merredin Firebreak Order.

A number of infringements were issued during the reporting period to persons parking in a parking bay reserved for use by people with a disability. The relevant bays are clearly marked and there is no excuse for an abled bodied person to utilise these bays given that there is plenty of parking available within the Merredin CBD.

There were 2 occurrences of illegal dumping of waste materials but both were of a minor nature.

It is pleasing to note the community is generally supportive of the efforts being made in the areas of need.

VOLUNTEER BUSH FIRE BRIGADES

It was ascertained that a large number of the members of the brigades had not completed the basic required courses to be active volunteers. It was resolved at the Bush Fire Brigades (BFB) AGM in March 2016 that all volunteers would, by the March 2018 AGM, have completed the two courses or face being deregistered as BFB volunteers.


The BFB vehicles have been fitted with automatic vehicle location systems.

ENVIRONMENTAL HEALTH

The Shire utilises an in-house Environmental Health Officer to provide services to the Shire.

During the reporting period the following major projects were completed:

- annual lodging house, Caravan Park, food and public buildings inspections;
- annual inspection of hairdressers and beauticians;
- a number of written requests were issued to food business proprietors relating the *Food Act 2008* and have been complied with;
- certificates of approval have now been issued for most of the public buildings;
- swimming pool inspections have been completed as part of the 4 yearly cycle of inspections under the *Building Act 2012*;
- the domestic/commercial waste management contract with Avon Waste is going well;
- 2x *Health Act 1911* Unfit for Human Habitation notices were issued;

- 
- 2x Building Orders under the *Building Act 2011* were issued;
 - 2x infringements issued for breaches of the Extractive Industries Local Law;
 - *Health Act 1911* nuisance provision notices issued relating to a failing septic system;
 - 2x septic tank and leach drain installations were approved with permits to use issued;
 - all compliance and annual reports were submitted to the relevant State and Federal agencies;
 - an Audit of the Waste Water Reuse Scheme was undertaken by the Water Corporation on behalf of the Department of Health, the Audit report rates the Shire's performance as being satisfactory to very good;
 - The Executive Manager of Development Services is involved with a number of departmental working groups and has had input in to the development of Public Health Act related legislation.

Staff have been working proactively with the local community to improve public health standards, and it is pleasing to note that there is a general acceptance in the community of the need to improve public health practices and standards with respect to Food and Public Building requirements.



ENGINEERING SERVICES

Council has continued with the commitment to enhance roads, footpaths and drainage infrastructure within the Shire. This is achieved through the utilisation of its own financial resources and funding from the following external sources:

Federal funding:

- Roads to Recovery Program

State funding:

- State Blackspot Program
- Regional Road Group

TOWN MAINTENANCE

The crew had another busy and productive year performing their duties that include gardening, slashing, spraying and the maintenance of the Recreation Centre oval and town parks and surrounds.

ROAD CONSTRUCTION AND MAINTENANCE

OWN RESOURCES

Footpath Construction

| | |
|----------------|-------------------|
| Haig Road | New dual use path |
| Harling Street | New dual use path |
| Snell Street | New dual use path |

Road Construction

| | |
|--------------------------|-----------------|
| Bicks Road | Gravel sheeting |
| Neening Road | Gravel sheeting |
| Collgar South Road | Gravel sheeting |
| Depot Dam Road | Gravel sheeting |
| Arnold Road | Gravel sheeting |
| Burracoppin Campion Road | Gravel sheeting |
| Collgar West Road | Gravel sheeting |
| Crees Street | Gravel sheeting |

| | |
|----------------|---------------------------------------|
| Teasdale Road | Gravel sheeting |
| Fifth Street | Asphalt seal |
| Telfer Road | Edge repairs |
| Woolgar Avenue | Asphalt seal |
| CBD Upgrade | Asphalt seal / Spray seal/Landscaping |

General Maintenance

| | |
|--------------------------|--|
| General road maintenance | Grading, vegetation clearance, pothole repairs and road sign replacement ongoing |
|--------------------------|--|

| | |
|-------------------------|---------------------|
| Total Cost - O/R | \$ 1,594,595 |
|-------------------------|---------------------|

REGIONAL ROAD GROUP (RRG)

Construction/Maintenance

| | |
|----------------------------|---------------------------|
| Chandler Road | 2 nd coat seal |
| Bruce Rock Doodlakine Road | 2 nd coat seal |
| Brissenden Road | 2 nd coat seal |

| | |
|-------------------------|---|
| Total Cost - RRG | \$ 700,094 (incl \$243,487 of Own Resources) |
|-------------------------|---|

ROADS TO RECOVERY (R2R)

Construction/Maintenance

| | |
|-----------------------------|--------------------------------|
| Cunningham Street | Asphalt seal |
| Gamenya Avenue | Asphalt seal |
| Mitchell Street | Asphalt reseal |
| Nangeenan North Road | 2 nd coat seal |
| Barrack Street | Pavement repairs /Asphalt seal |
| Barrack Street East | Asphalt seal |
| Hendricks Road | Gravel sheeting |
| Muntadgin Road | Gravel sheeting |
| Burracoppin North West Road | Gravel sheeting /stabilise |
| Dunlop Road | Gravel sheeting /stabilise |

| | |
|-------------------------|------------------|
| Total Cost - R2R | \$913,431 |
|-------------------------|------------------|

STATE BLACK SPOT FUNDING (SBSF)

Construction/Maintenance

| | |
|--------------------|---------|
| Totadgin Hall Road | On hold |
|--------------------|---------|

| | |
|--------------------------|------------|
| Total Cost - SBSF | \$0 |
|--------------------------|------------|

NATURAL RESOURCE MANAGEMENT

The Shire of Merredin is one of fifteen Wheatbelt Shires that delivered the Federally-funded, multi-year *Connecting Biodiversity Across the Wheatbelt of Western Australia* project. The project finished on 30 June 2017. Over the three rounds of on-ground works, sixteen land managers within the Shire received a combined total of \$157,150 (ex GST) for 60km of fencing to protect 1374ha of remnant vegetation. They also received \$13,112 (ex GST) for pest animal management activities protecting 471ha, and were supplied with a total of 72,560 seedlings for revegetation projects.

The Shire of Merredin was successful in receiving \$12,955 (ex GST) in funding from the State NRM Office for the *Overcoming Barriers to Baiting in the Eastern Wheatbelt* project. The project also covers the Shires of Mt Marshall, Nungarin and Trayning and is to supply landholders with the skills and resources necessary to successfully conduct baiting programs.

The Shire of Merredin retained its Waterwise Council endorsement for 2017 and the Merredin District Olympic Swimming Pool remained endorsed under the Waterwise Aquatic Centre program.

Monitoring and treatment of known Skeleton Weed infestation sites on roadsides throughout the Shire was undertaken during 2016/17.





COMMUNITY SERVICES

CUMMINS THEATRE

It is an exciting time at the Cummins Theatre as we continue in our goal to be the central hub for arts and culture in the Central Eastern Wheatbelt. Our 2016/17 financial year built on the success of previous years as the theatre offered a program of live performances, workshops, simulcasts, classes and private events ensuring all members of the community could become actively involved.

Live Performances

The theatre delivered its first full year of live performance under its new programming model first introduced in late 2015. The new model is designed to offer performances for all members of the community under varying program streams.

Lunchtime Escapes

Lunchtime Escapes were introduced to encourage audiences to attend the theatre during the day for short bi-monthly performances across a variety of genres including Opera (*Brianna Louwen*), Musical Theatre (*Michael Griffiths in Cole* and *A Leading Lady in Waiting* by Kimberley Diane), Drama (*Shadowboxing* by Black Swan State Theatre Company), and Comedy (*Barry Morgan World of Organs*). The performances were well received with over 250 individuals attending the shows, many for the first time.

Wheatbelt Touring Circuit

A partnership between West Australian Music (WAM) and the Cummins Theatre saw the introduction of live music concerts by visiting and local artists. In total the theatre hosted four concerts, all of which featured Merredin musicians supported by artists from Perth. It has

been some years since the theatre hosted live contemporary music and the concerts were well received with all at 90% capacity or more.

Theatre Education Program

This newly introduced stream of programming saw four theatre productions brought to the Cummins Theatre specifically for school audiences; *Shadowboxing* by Black Swan State Theatre Company, *Odyssey* by Sensorium Theatre, *Awesome Festival Roadshow*, and *In A Dark Dark Wood* by Barking Gekko Theatre Company. Each performance was supported with curriculum documents accessible to schools and the opportunity to get up close with artists through workshops, question sessions, and backstage tours. In total five local schools attended the performances with over 1200 students participating in the program.

Main Stage Productions

Our Main Stage productions continue to improve in quality and diversity with performances ranging from comedy, live music, cabaret, musicals, dance and family friendly performances. Special performances including *Always...Patsy Cline*, *Michael Griffiths Cole* and *Rumour Has It* were supported with dinner prior to the performances with all shows selling out of dinner and show tickets. Ticket sales across all shows has increased by 50% on previous financial year.

There has also been more effort to link live performances to workshops with many of the main stage shows being supported by community arts based workshops in an effort to increase audience numbers and increase the number of community members participating in workshop programs.

Cummins Kids

The Cummins Kids program continues to expand and has seen some amazing initiatives for young people aged 5-17 years engaging with professional arts workers and creators. Programs run have included:

- Christmas Wonderland – a week long activity workshop where children could visit the North Pole, create a different Christmas craft each day, and experience the joy of Christmas in the surrounds of the Cummins Theatre
- Photography Workshop – with visiting artists from Camera Story children learned the skills to take their own photographs culminating in a public exhibition
- Small Voices Louder – Children learned about the big questions in life and created audio recordings that were later used in a public exhibition of artworks

Workshops

2016/17 saw the expansion of the workshop program at the Cummins Theatre. Previously the theatre had offered ad hoc workshop opportunities with visiting artists but in 2016/17 this was expanded to include local artists who could teach skills more regularly. Throughout the year a number of workshops were run including learning skills in singing, dancing, acting, hair styling, make-up, cooking, costume design, backstage duties, set design and construction, lighting, and many others.

Funding

The theatre continues to work towards reducing financial loss and seeks to increase its funding applications which serve to benefit the community through exciting new arts initiatives. Funding bodies have been responding positively to our initiatives and continue to support our projects through guidance, invitations to attend funding feedback sessions, and assisting with future planning.

New funding opportunities continue to arise especially through the Regional Venues Improvement Fund, and the Department of Culture and the Arts. Projects which have gained support in 2016/17 include the:

- Main Stage Program - Lotterywest
- Community Workshop Program – Department of Culture and the Arts
- The Small Voices Program – Regional Arts Fund through Country Arts WA
- Technical Upgrade – Department of Culture and the Arts
- Technical Furniture – Lotterywest

As we move into our 90th Birthday year in 2018 we hope to build on the success of the theatre to deliver more high quality arts events for the Merredin community.







COMMUNITY EVENTS

Community Services continues to work with residents, community based organisations and service providers to co-ordinate a number of community events and activities that provide social opportunities, the sharing of skills and knowledge and the opportunity to participate as families in community events.

The majority of these programs and projects rely on outside funding to be secured before the project can go ahead.

These events include:

- Playdate for the 0 to 4 year olds, their parents, carers, grandparents and friends;
- Youth Activities - park art on the current Merredin Skate Park, in conjunction with Avon Youth and Cummins Theatre;
- Attending senior's meetings at the Merredin Senior Citizen Centre;
- Provision of activities for NAIDOC Week in conjunction with Merredin College;
- 2016 Gala Night in conjunction with the community and the Community Services team;
- Anzac Day Commemorations in conjunction with the community, Merredin RSL and the Community Services team;
- Destination Merredin, in conjunction with the Churches' Fraternal, community and the Community Services team;
- Twilight International Food Festival, in conjunction with the community and the Community Services Team;
- Ongoing development of the "Wool Bale" project (planter boxes);
- Banners in the Terrace in conjunction with Merredin College; and
- Research into the possibility/feasibility of a Dog Park.



LIBRARY SERVICES

As part of the State Library of Western Australia (SLWA) Regional Services program the Merredin Regional Library continued its support of libraries in the Wheatbelt. Shires supported include Bruce Rock, Kellerberrin, Mt Marshall, Mukinbudin, Narembreen, Nungarin, Trayning, Westonia and Yilgarn.

The support offered included staff training, workshops, meetings and remote assistance with library operations and lending. This support is funded by the State Library of Western Australia (SLWA) and the participating local governments.

The library continued to engage with the local community through a number of activities including:

- Storytime held in the library on Tuesday mornings throughout the school term, MADCAPS on a monthly basis and on Thursday and Friday mornings at Merredin College;
- participation in the Family Fun Days held in conjunction with Amity Health;
- continued support of the Tales of Times Past Senior Storytellers;
- hosting the 100 year centenary display from the RSL;
- hosting the Great Eastern Highway Road Alliance meetings;
- hosting a meeting on the future of the No. 4 Pump Station;
- hosting authors Linda Bettenay and Ros Worthington;
- again hosting a Pink Morning Tea raising money for Cancer Research; and
- school holiday programs run in July, October, January and April.

Library staff have worked tirelessly to ensure that all visitors to the library have a positive experience, including continually changing shelving and stock around as they work to provide the best fit for the new library. This has included creating new 'collections', such as the "Australiana" collection, enabling readers to easily find those books written about Australia by Australian authors.

Funding was acquired from LotteryWest to create a memorabilia area / reading area in the library. This will, when opened in the near future, showcase local history information and memorabilia for people to view and study in a comfortable area.

The library continues to offer free access for library members to eBooks, eAudiobooks and eMagazines through the WA Public Library Digital Media Collection and the SLWA. New digital platforms such as Kanopy are being investigated.

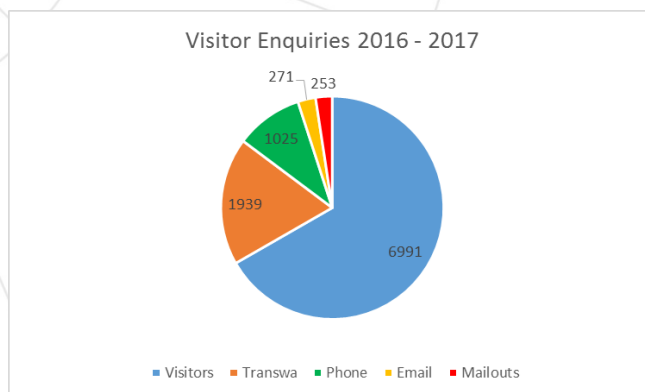
The library also provides its members free access to online tutorials through its subscription to The Computer School. Members can access over 10,000 tutorials, from the comfort of their own home, covering topics such as Windows10, digital photography, using social media, coding and much more.

The library's catalogue continues to be available online for members to search or renew their borrowed items. The catalogue can be accessed via www.merredin.wa.gov.au/library-services.aspx.

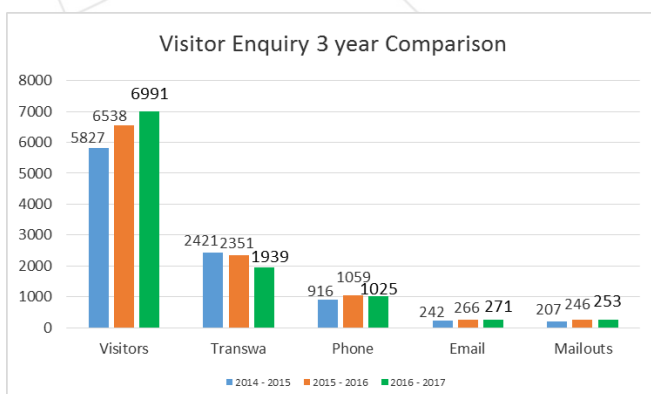


VISITOR SERVICES

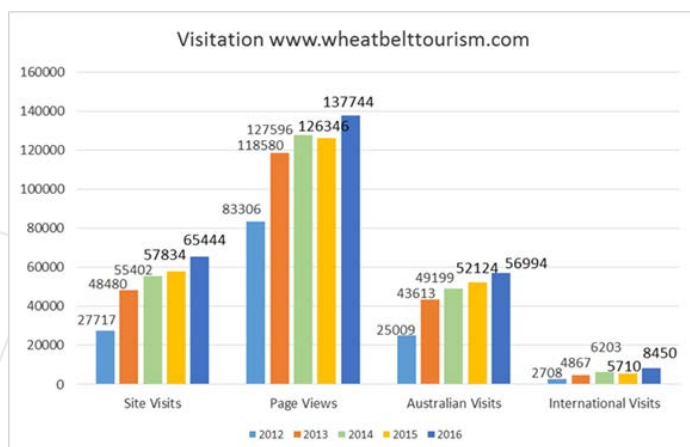
The Central Wheatbelt Visitors Centre (CWVC) continues to be the dominant hub visitor centre and professional servicing point for Merredin and the Eastern Wheatbelt. Staff provide a professional level of visitor servicing and call to action for Australia's Golden Outback (AGO) and Wheatbelt cooperative marketing campaigns. The centre is currently open Monday to Friday 8:30am to 4:30pm and during Sept/Oct 2016 open weekends.



Graph indicates comparison of the visitor servicing enquiries



Graph indicates a 3 year comparison of the visitor servicing enquiries



Graph indicates a steady increase of website visitation over a 5 year period

Annual Licence and Membership Renewals

The CWVC is committed to provide a professional accredited Level 2 regional visitor centre and with this obligation, a number of annual licences and memberships are required. The Tourism Council WA conducted an onsite Australian Tourism Accreditation Program (ATAP) assessment in February 2017 as part of their requirement for procedures and policies. A certificate of accreditation for 2017/18 awarded.

- ASIC Australian Business Name – Renewal due April 2019
- Tourism Council WA Ltd– Renewed June 2017
 - Australian Tourism Accreditation Program (ATAP)
 - VCWA – Visitor Centre Golden I Membership
 - VC – Level 2 Membership and Marketing Levy
 - Tourism Council WA – Bronze Membership
 - Italic I Marketing
- Australia's' Golden Outback (AGO) – Gold Membership renewed June 2017
- Digital Monopoly - Annual Website Hosting – renewed July 2017
- Forum Advocating Cultural & Eco-Tourism Inc (FACET) Membership August 2017

AGO/Wheatbelt Cooperative Marketing and Trade Shows

The CWVC continues to support AGO in regional tourism promotion including:

- 2017 Perth Caravan and Camping Show – Staff coordinated and attended this important trade show supported by regional tourism professionals.
- The CWVC Manager remains the current Wheatbelt Representative on the AGO Board with the two year term expiring at the October 2017 AGM in Kalgoorlie.

AGO Cooperative Advertising - Weekend West Australian and Sunday Times Travel Section

- 3 x Wheatbelt Self Drive Trail – Pioneers' Pathway and Golden Pipeline
- 3 x Wheatbelt Wildflowers – Pioneers' Pathway and Golden Pipeline

Event Packages

- Merredin Festa Italiana October 2016– Laguna Bocce Club's accommodation, tours and transfers

Other Advertising – Annual Holiday Planners, Tourism and Community Publications

CWVC continues to support annual marketing tools for the promotion of Merredin including:

- AGO Holiday Planner 2017
 - Self-drives Pioneers' Pathway and Golden Pipeline Heritage Trail
 - Shire of Merredin full page town and attraction information
- Cooks Tours 'Beautiful South' full page town and attraction information
- Merredin and Districts Community Phone Directory – CWVC Services

Regional Tourism Promotion

- Edition 4 of The Eastern Wheatbelt WA – A Visitors' Guide - Produced and printed for 20 Eastern Wheatbelt (EW) Shires. 25,000 copies distributed state wide by TMP and throughout the Eastern Wheatbelt by the CWVC, reprinted March 2017.
- The WEROC Shires and Shires of Cunderdin and Tammin continued the agreement and signed the CWVC MoU 2017-2018 for a further annual contribution towards regional promotion.
- Under the banner of the Eastern Wheatbelt Tourism Group, NewTravel, Roe Tourism, WEROC and member Shires of Cunderdin and Tammin continue to hold quarterly meetings developing regional tourism initiatives that benefit all EW regions and strengthening the Eastern Wheatbelt tourism.

WEROC App

The CWVC Tourism Officer along with the DCEO have project managed the WEROC App with data collection for businesses and tourism attraction provided to the WEROC App designers for a 25 August 2017 launch.

Central Wheatbelt Visitor Centre Membership

Working towards a more sustainable future the CWVC took the initiative for the first time in 2016 to provide a membership prospectus to all businesses in the Eastern Wheatbelt currently listed on wheatbelttourism.com. Three levels of membership were offered and an affiliate/not-for-profit level 4.

Central Wheatbelt Tourism Website

www.wheatbelttourism.com had a refresh which was project managed in-house with the CWVC Tourism Officer and Media Officer preparing and populating a brand new template with easier navigation. Since the completion of the upgrade in February 2017 there has been and increased visitation to the site indicating the improvements have been beneficial.

Retail and Consignment Stock

- Continue to increased consignment stock from local and regional arts and crafts suppliers building up a range of unique handmade items.
- Increasing our historical and Wheatbelt themed publications, many of which are sold from the list of publication on our website.

Training, Conferences and Familiarisations

- Manager attended St John First Aid Course April 2017
- Staff completed Tourism Council e-Tourism Coaching in February 2016
- Tourism Officer completed the first of three scheduled Leadership Workshops for 2017
- Staff participated in all LGIS Wellness Workshops and Shire health challenges.

Local Initiatives

- **A Merredin Brochure** including town and regional map was produced by CWVC Staff and printed for the first time in May 2017 and distributed by the CWVC to the Eastern Wheatbelt and state VC's. This has proved a valuable marketing tool for the Shire of Merredin.
- **Merredin Tourism Group** continues to work collaboratively with CWVC Member businesses, the Museums volunteers and interested community members to develop and increase the interest of Merredin's attractions through famils and community awareness opportunities.

Regional Visitor Centre Sustainability Grant Application

Round 1 – Application approved 6 projects to be completed before December 2016:

- Two e-tricycles to hire
- Two Town Entry Statements on east & west entry on Great Eastern Highway
- Two CCTV camera and data recording equipment inside the visitor centre
- Historical images window decal for the CWVC
- Eight Highway Attraction signs depicting key attractions
- Shade shelter in the visitor centre precinct

Round 2 – Application approved 3 projects to be completed before July 2017:

- Merredin Time line signage and seating for the Round 1 funded Shade Shelter
- Information Bays upgrade, renewal and relocation to Pioneer Park
- Visitor centre staff's work station upgrade and additional glass display case

Round 3 – Application for 4 Projects submitted June 2017

Project 1 - Improving Image & Appearance

- a. Custom Book Shelves, Counter & Public Notice Board + Seating
- b. Additional Window Decal with historical images
- c. Story Panels
- d. CWVC branded sign

Project 2 - WIFI hotspot for CWVC

Project 3 - Staff Training: Tourism Workshops, Certificate III Tourism

Project 4 – External Bike Rail for e-Tricycles



RECREATIONAL SERVICES

As mentioned in the [CEO's Report](#), the operational management of the MRCLC was contracted to Belgravia Leisure from 1 October 2016. Therefore, the report below covers the period from July to September 2017.

Sporting Events and Fixtures

All winter sports had successful fixtures and final games. We hosted the grand final of the EDFL in September and women's hockey.

Aquafit classes and infant swimming/water safety classes were delivered by trained instructors and all were well supported.

A 0-4 program was facilitated by staff on a fortnightly basis with very small numbers attending. The program focussed on social and creative activity and physical exercise.

The winter sports carnival for the Wheatbelt region was held on the weekend of 13-14 August. Over 60 children attended this one day carnival of netball, football and hockey. A well run event by a community committee.

Other Events Held

- Fun Run event – September supporting Diabetes WA
- Dogs Day Out – September on the old hocket ground
- July School Holiday program – multi-sport days, movie days and in collaboration with Avon Youth we co-hosted the Rock Star Challenge
- 3x birthday parties
- Golf tournament
- EWEYN events for 0-4 years including Baby Boot Camp and Spring Day in the Community Garden were hosted and supported by staff
- 3x supervised parent child meetings
- Funeral service
- Quiz Night for Give Me Five for Kids
- Numerous Corporate/Private functions and meetings

Staffing

Two fulltime program and administration staff, a part time bar manager and the centre manager were employed during the three month period.

Facility Maintenance

Maintenance of the building including leaking roof spots over the stadium, and a full deep clean of the kitchen and bar area were completed along with all carpets and chairs steam cleaned.

Antisocial behaviour caused damage and added to cleaning costs and repairs over the winter sports season. A lack of respect and sense of ownership for the facilities is disappointing. New measures of control in all change rooms and event management have been put in place. All security cameras and data recording devices will be updated.

Numerous breaches of security occurred during the reporting period. A more accurate key register is being established and it is planned to change all security codes by the end of the year.

General

The MRCLC facility is one of the best facilities for social community and sporting events in the region. It is a privilege to manage it all for the whole community.

FINANCIAL STATEMENTS

SHIRE OF MERREDIN
FINANCIAL REPORT
FOR THE YEAR ENDED 30TH JUNE 2017

TABLE OF CONTENTS

| | |
|---|----|
| Statement by Chief Executive Officer | 2 |
| Statement of Comprehensive Income by Nature or Type | 3 |
| Statement of Comprehensive Income by Program | 4 |
| Statement of Financial Position | 5 |
| Statement of Changes in Equity | 6 |
| Statement of Cash Flows | 7 |
| Rate Setting Statement | 8 |
| Notes to and Forming Part of the Financial Report | 9 |
| Independent Audit Report | 57 |
| Supplementary Ratio Information | 60 |

Principal place of business:
Address
Crn Barrack & King Streets
Merredin WA 6415